

For Research Use Only

NUDCD1 Polyclonal antibody

Catalog Number: 32473-1-AP



Basic Information

Catalog Number: 32473-1-AP	GenBank Accession Number: NM_032869.3	Purification Method: Antigen affinity Purification
Size: 150ul , Concentration: 300 ug/ml by Nanodrop;	GeneID (NCBI): 84955	Recommended Dilutions: WB 1:1000-1:4000 IF/ICC 1:200-1:800
Source: Rabbit	UNIPROT ID: Q96RS6	
Isotype: IgG	Full Name: NudC domain containing 1	
Immunogen Catalog Number: AG38518	Calculated MW: 67 kDa 583aa	
	Observed MW: 67 kDa	

Applications

Tested Applications: WB, IF/ICC, ELISA	Positive Controls:
Species Specificity: human	WB : MCF-7 cells, MDA-MB-231 cells IF/ICC : A431 cells,

Background Information

NudC domain-containing protein 1 (NUDCD1, also known as CML66) is a protein that plays a crucial role in various biological processes, including cell proliferation, migration, cell cycle progression, and intracellular material transport (PMID: 38553373). NUDCD1 has been identified as an oncoprotein frequently activated or overexpressed in multiple human cancers, suggesting its role in promoting cancer cell growth and metastasis (PMID: 29888104). It is abnormally activated in various tumors and has been identified as a cancer antigen (PMID: 37338527).

Storage

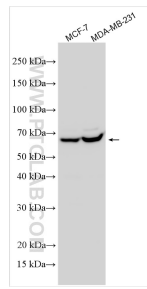
Storage:
Store at -20°C. Stable for one year after shipment.
Storage Buffer:
PBS with 0.02% sodium azide and 50% glycerol pH 7.3.
Aliquoting is unnecessary for -20°C storage

*** 20ul sizes contain 0.1% BSA

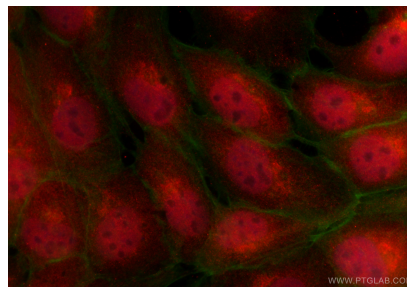
For technical support and original validation data for this product please contact:
T: 1 (888) 4PTGLAB (1-888-478-4522) (toll free in USA), or 1(312) 455-8498 (outside USA)
E: proteintech@ptglab.com
W: ptglab.com

This product is exclusively available under Proteintech Group brand and is not available to purchase from any other manufacturer.

Selected Validation Data



Various lysates were subjected to SDS PAGE followed by western blot with 32473-1-AP (NUDCD1 antibody) at dilution of 1:2000 incubated at room temperature for 1.5 hours.



Immunofluorescent analysis of (4% PFA) fixed A431 cells using NUDCD1 antibody (32473-1-AP) at dilution of 1:400 and CoraLite®594-Conjugated Goat Anti-Rabbit IgG(H+L) (SA00013-4), CL488-Phalloidin (green).