

For Research Use Only

# IPO8 Polyclonal antibody, PBS Only

Catalog Number: 32476-1-PBS



## Basic Information

<b>Catalog Number:</b> 32476-1-PBS	<b>GenBank Accession Number:</b> BC167853	<b>Purification Method:</b> Antigen affinity Purification
<b>Size:</b> 100ug , Concentration: 1 mg/ml by Nanodrop;	<b>GeneID (NCBI):</b> 10526	
<b>Source:</b> Rabbit	<b>UNIPROT ID:</b> O15397	
<b>Isotype:</b> IgG	<b>Full Name:</b> importin 8	
<b>Immunogen Catalog Number:</b> AG35395	<b>Observed MW:</b> 120-125 kDa	

## Applications

**Tested Applications:**  
WB, Indirect ELISA

**Species Specificity:**  
human, mouse

## Background Information

IPO8(Importin 8) is a gene encoding protein, which is located on human chromosome 12. It belongs to the nuclear protein transport family, and is mainly involved in the process of nuclear protein introduction. IPO8 regulates the transport function of nuclear pore complex by interacting with Ran GTPase and other proteins (PMID: 11682607). It is expected to be located in the cytoplasm and nucleus. IPO8 is associated with many diseases, including VISS syndrome and Loey-Dietz syndrome. These diseases usually involve cardiovascular defects, skeletal abnormalities and immune loss. The molecular weight of PO8 protein is about 125kDa, and its structure includes helix and  $\beta$ -sheet. It has a specific three-dimensional structure and can form complexes with other protein.

## Storage

**Storage:**  
Store at -80°C.

**Storage Buffer:**  
PBS only, pH7.3

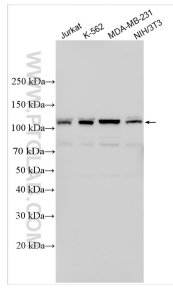
For technical support and original validation data for this product please contact:

T: 1 (888) 4PTGLAB (1-888-478-4522) (toll free  
in USA), or 1(312) 455-8498 (outside USA)

E: [proteintech@ptglab.com](mailto:proteintech@ptglab.com)  
W: [ptglab.com](http://ptglab.com)

**This product is exclusively available under Proteintech Group brand and is not available to purchase from any other manufacturer.**

## Selected Validation Data



Various lysates were subjected to SDS PAGE followed by western blot with 32476-1-AP (IPO8 antibody) at dilution of 1:3000 incubated at room temperature for 1.5 hours. This data was developed using the same antibody clone with 32476-1-PBS in a different storage buffer formulation.