

For Research Use Only

RNF220 Polyclonal antibody

Catalog Number: 32482-1-AP



Basic Information

Catalog Number: 32482-1-AP	GenBank Accession Number: BC034221	Purification Method: Antigen affinity Purification
Size: 150ul , Concentration: 400 ug/ml by Nanodrop;	GeneID (NCBI): 55182	Recommended Dilutions: WB 1:2000-1:12000
Source: Rabbit	UNIPROT ID: Q5VTB9	
Isotype: IgG	Full Name: ring finger protein 220	
Immunogen Catalog Number: AG36190	Observed MW: 70 kDa	

Applications

Tested Applications: WB, ELISA	Positive Controls: WB : RT-4 cells, U-251 cells, mouse brain tissue, rat brain tissue
Species Specificity: human, mouse, rat	

Background Information

RNF220 is an E3 ubiquitin ligase that plays a crucial role in the ubiquitination process, which targets proteins for degradation by the proteasome. Mutations in RNF220 have been linked to laminopathies, which are characterized by leukodystrophy, ataxia, and deafness. Additionally, RNF220 is involved in the progression of certain cancers, such as acute myeloid leukemia (AML) and colorectal cancer. Studies have shown that RNF220 promotes the proliferation of leukemia cells and reduces the degradation of Cyclin D1 protein through USP22. It also enhances canonical Wnt signaling through USP7-mediated deubiquitination of beta-catenin. (PMID: 32896826)

Storage

Storage:
Store at -20°C. Stable for one year after shipment.
Storage Buffer:
PBS with 0.02% sodium azide and 50% glycerol pH 7.3.
Aliquoting is unnecessary for -20°C storage

*** 20ul sizes contain 0.1% BSA

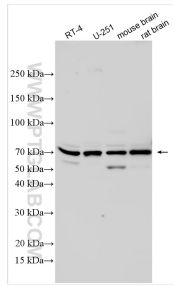
For technical support and original validation data for this product please contact:

T: 1 (888) 4PTGLAB (1-888-478-4522) (toll free in USA), or 1(312) 455-8498 (outside USA)

E: proteintech@ptglab.com
W: ptglab.com

This product is exclusively available under Proteintech Group brand and is not available to purchase from any other manufacturer.

Selected Validation Data



Various lysates were subjected to SDS PAGE followed by western blot with 32482-1-AP (RNF220 antibody) at dilution of 1:6000 incubated at room temperature for 1.5 hours.