

For Research Use Only

LELP1 Polyclonal antibody, PBS Only

Catalog Number: 32483-1-PBS



Basic Information

Catalog Number:

32483-1-PBS

Size:

100ug, Concentration: 1 mg/ml by Nanodrop;

Source:

Rabbit

Isotype:

IgG

Immunogen Catalog Number:

AG36831

GenBank Accession Number:

BC130507

GeneID (NCBI):

149018

UNIPROT ID:

Q5T871

Full Name:

late cornified envelope-like proline-rich 1

Calculated MW:

11 kDa

Observed MW:

17 kDa

Purification Method:

Antigen affinity Purification

Applications

Tested Applications:

WB, Indirect ELISA

Species Specificity:

human, rat

Background Information

Late cornified envelope-like proline-rich protein 1 (LELP1) is part of the epidermal differentiation complex (EDC), a cluster of genes that encode proteins essential for the differentiation of keratinocytes and the formation of the stratum corneum (PMID: 34112911). A single nucleotide polymorphism (SNP) in the LELP1 gene has been associated with atopic dermatitis, a chronic inflammatory skin disorder characterized by elevated levels of serum immunoglobulin E (IgE) and severe skin inflammation (PMID: 26608070).

Storage

Storage:

Store at -80°C.

Storage Buffer:

PBS only, pH7.3

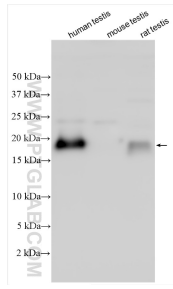
For technical support and original validation data for this product please contact:

T: 1 (888) 4PTGLAB (1-888-478-4522) (toll free in USA), or 1(312) 455-8498 (outside USA)

E: proteintech@ptglab.com
W: ptglab.com

This product is exclusively available under Proteintech Group brand and is not available to purchase from any other manufacturer.

Selected Validation Data



Various lysates were subjected to SDS PAGE followed by western blot with 32483-1-AP (LELP1 antibody) at dilution of 1:1000 incubated at room temperature for 1.5 hours. This data was developed using the same antibody clone with 32483-1-PBS in a different storage buffer formulation.