

For Research Use Only

PRSS21 Polyclonal antibody

Catalog Number:32522-1-AP



Basic Information

Catalog Number: 32522-1-AP	GenBank Accession Number: BC074999	Purification Method: Antigen affinity purification
Size: 150ul , Concentration: 400 ug/ml by Nanodrop;	GeneID (NCBI): 10942	Recommended Dilutions: WB: 1:500-1:2000 IHC: 1:200-1:800 FC (Intra): 0.25 ug per 10 ⁶ cells in a 100 µl suspension
Source: Rabbit	UNIPROT ID: Q9Y6M0	
Isotype: IgG	Full Name: protease, serine, 21 (testisin)	
Immunogen Catalog Number: AG38156	Calculated MW: 314 aa, 35 kDa	

Applications

Tested Applications: WB, IHC, FC (Intra), ELISA	Positive Controls: WB : mouse testis tissue, IHC : mouse testis tissue, FC (Intra) : A431 cells,
Species Specificity: human, mouse	
Note-IHC: suggested antigen retrieval with TE buffer pH 9.0; (*) Alternatively, antigen retrieval may be performed with citrate buffer pH 6.0	

Background Information

PRSS21 (Serine Protease 21), a trypsin family member, may be active on peptide linkages involving the carboxyl group of lysine or arginine. In terms of disease association, PRSS21 is implicated in various cancers, such as gastric cancer, testicular cancer, and ovarian cancer.

Storage

Storage:
Store at -20°C. Stable for one year after shipment.
Storage Buffer:
PBS with 0.02% sodium azide and 50% glycerol, pH7.3
Aliquoting is unnecessary for -20°C storage

*** 20ul sizes contain 0.1% BSA

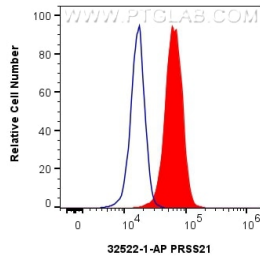
For technical support and original validation data for this product please contact:

T: 1 (888) 4PTGLAB (1-888-478-4522) (toll free in USA), or 1(312) 455-8498 (outside USA)

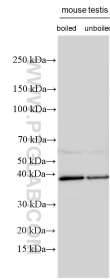
E: proteintech@ptglab.com
W: ptglab.com

This product is exclusively available under Proteintech Group brand and is not available to purchase from any other manufacturer.

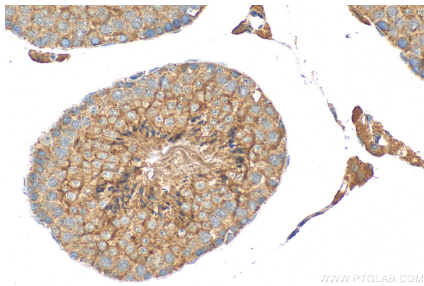
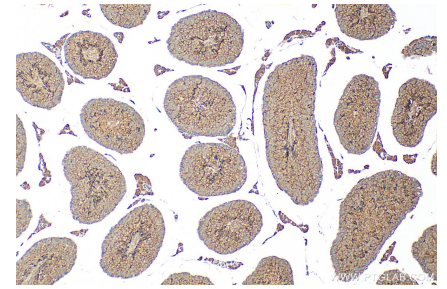
Selected Validation Data



1×10^6 A431 cells were intracellularly stained with 0.25 μ g Prss21 Polyclonal Antibody (32522-1-AP) and CoraLite@488-Conjugated Goat Anti-Rabbit IgG(H+L) (SA00013-2)(red), or 0.25 μ g rabbit IgG isotype control (blue). Cells were fixed with 4% PFA and permeabilized with Flow Cytometry Perm Buffer.



Mouse testis lysates were subjected to SDS PAGE followed by western blot with 32522-1-AP (PRSS21 antibody) at dilution of 1:1000 incubated at room temperature for 1.5 hours.



Immunohistochemical analysis of paraffin-embedded mouse testis tissue slide using 32522-1-AP (PRSS21 antibody) at dilution of 1:400 (under 40x lens). Heat mediated antigen retrieval with Tris-EDTA buffer (pH 9.0).