

For Research Use Only

# CX3CL1 Polyclonal antibody

Catalog Number: 32529-1-AP



## Basic Information

<b>Catalog Number:</b> 32529-1-AP	<b>GenBank Accession Number:</b> NM_134455.1	<b>Purification Method:</b> Antigen affinity Purification
<b>Size:</b> 150ul , Concentration: 500 ug/ml by Nanodrop;	<b>GeneID (NCBI):</b> 89808	<b>Recommended Dilutions:</b> WB 1:500-1:3000
<b>Source:</b> Rabbit	<b>UNIPROT ID:</b> O55145	
<b>Isotype:</b> IgG	<b>Full Name:</b> chemokine (C-X3-C motif) ligand 1	
	<b>Calculated MW:</b> 42 kDa	
	<b>Observed MW:</b> 35 kDa	

## Applications

<b>Tested Applications:</b> WB, ELISA	<b>Positive Controls:</b> WB : mouse brain tissue,
<b>Species Specificity:</b> mouse, rat	

## Background Information

CX3CL1, also known as fractalkine, is a trans-membrane chemokine that acts as a ligand for both CX3CR1 and integrins  $\alpha\beta3$  and  $\alpha4\beta1$  (PMID: 9479488; 23125415). CX3CL1 is expressed by many hematopoietic and nonhematopoietic cells, including macrophages, endothelial cells, neurons, and fibroblasts. It is involved in immune responses and inflammation (PMID: 21045240). CX3CL1 exists in a membrane-anchored molecule and a soluble form, generated by proteolytic cleavage (PMID: 11495925; 12714508).

## Storage

**Storage:**  
Store at -20°C. Stable for one year after shipment.  
**Storage Buffer:**  
PBS with 0.02% sodium azide and 50% glycerol pH 7.3.  
Aliquoting is unnecessary for -20°C storage

\*\*\* 20ul sizes contain 0.1% BSA

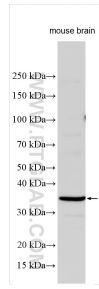
For technical support and original validation data for this product please contact:

T: 1 (888) 4PTGLAB (1-888-478-4522) (toll free in USA), or 1(312) 455-8498 (outside USA)

E: [proteintech@ptglab.com](mailto:proteintech@ptglab.com)  
W: [ptglab.com](http://ptglab.com)

This product is exclusively available under Proteintech Group brand and is not available to purchase from any other manufacturer.

## Selected Validation Data



Various lysates were subjected to SDS PAGE followed by western blot with 32529-1-AP (CX3CL1 antibody) at dilution of 1:1500 incubated at room temperature for 1.5 hours.