

For Research Use Only

# GPR56 Polyclonal antibody

Catalog Number: 32532-1-AP



## Basic Information

### Catalog Number:

32532-1-AP

### Size:

150ul , Concentration: 500 ug/ml by Nanodrop;

### Source:

Rabbit

### Isotype:

IgG

### GenBank Accession Number:

NM\_001145771.2

### GeneID (NCBI):

9289

### UNIPROT ID:

Q9Y653

### Full Name:

G protein-coupled receptor 56

### Calculated MW:

78 kDa

### Observed MW:

65-70 kDa

### Purification Method:

Antigen affinity Purification

### Recommended Dilutions:

WB: 1:1000-1:4000

## Applications

### Tested Applications:

WB, ELISA

### Species Specificity:

human

### Positive Controls:

WB : A549 cells, Calu-1 cells, K-562 cells, U-87 MG cells

## Background Information

GPR56, also known as ADGRG1, is a member of the adhesion G protein-coupled receptor (aGPCR) family. These receptors are characterized by an extended extracellular region with a GPCR autoproteolysis inducing (GAIN) domain (PMID: 37980704). GPR56 is widely expressed in various tissues, including the liver, muscle, tendon, neural cells, and cytotoxic lymphoid cells in humans. It plays crucial roles in multiple biological processes such as cell guidance, adhesion, and development.

## Storage

### Storage:

Store at -20°C. Stable for one year after shipment.

### Storage Buffer:

PBS with 0.02% sodium azide and 50% glycerol, pH7.3

Aliquoting is unnecessary for -20°C storage

\*\*\* 20ul sizes contain 0.1% BSA

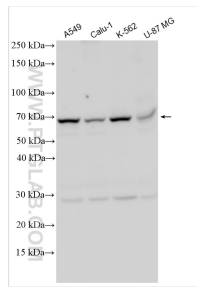
For technical support and original validation data for this product please contact:

T: 1 (888) 4PTGLAB (1-888-478-4522) (toll free in USA), or 1(312) 455-8498 (outside USA)

E: [proteintech@ptglab.com](mailto:proteintech@ptglab.com)  
W: [ptglab.com](http://ptglab.com)

This product is exclusively available under Proteintech Group brand and is not available to purchase from any other manufacturer.

## Selected Validation Data



Various lysates were subjected to SDS PAGE followed by western blot with 32532-1-AP (GPR56 antibody) at dilution of 1:2000 incubated at room temperature for 1.5 hours.