

For Research Use Only

JAM3 Polyclonal antibody

Catalog Number: 32543-1-AP



Basic Information

Catalog Number:

32543-1-AP

Size:

150ul, Concentration: 500 ug/ml by Nanodrop;

Source:

Rabbit

Isotype:

IgG

Immunogen Catalog Number:

EG2661

GenBank Accession Number:

NM_023277.4

GeneID (NCBI):

83964

UNIPROT ID:

Q9D8B7

Full Name:

junction adhesion molecule 3

Calculated MW:

35 kDa

Observed MW:

40 kDa

Purification Method:

Antigen affinity Purification

Recommended Dilutions:

WB 1:500-1:1000

Applications

Tested Applications:

WB, ELISA

Species Specificity:

mouse, rat

Positive Controls:

WB : mouse heart tissue, mouse kidney tissue, mouse testis tissue, rat heart tissue, rat testis tissue

Background Information

Junctional adhesion molecule 3 (JAM3) is a type I transmembrane glycoprotein containing two Ig-like domains, which is expressed in various tissues and plays a crucial role in cell junctions, cell polarity, and motility (PMID: 34292449; 28931565). It has been proposed that JAM3 participates in leukocyte-platelet interactions, as well as angiogenesis and brain development (PMID: 12208882; 23255084). JAM3 may also be a new marker for predicting the prognosis and immune functions of bladder cancer patients (PMID: 38400838).

Storage

Storage:

Store at -20°C. Stable for one year after shipment.

Storage Buffer:

PBS with 0.02% sodium azide and 50% glycerol

Aliquoting is unnecessary for -20°C storage

*** 20ul sizes contain 0.1% BSA

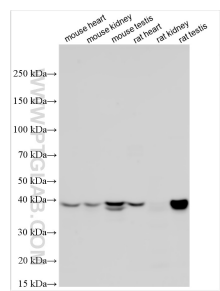
For technical support and original validation data for this product please contact:

T: 1 (888) 4PTGLAB (1-888-478-4522) (toll free in USA), or 1(312) 455-8498 (outside USA)

E: proteintech@ptglab.com
W: ptglab.com

This product is exclusively available under Proteintech Group brand and is not available to purchase from any other manufacturer.

Selected Validation Data



Various lysates were subjected to SDS PAGE followed by western blot with 32543-1-AP (JAM3 antibody) at dilution of 1:800 incubated at room temperature for 1.5 hours.