

For Research Use Only

CD122/IL-2RB Polyclonal antibody

Catalog Number: 32546-1-AP



Basic Information

Catalog Number:

32546-1-AP

Size:

150ul , Concentration: 500 ug/ml by Nanodrop;

Source:

Rabbit

Isotype:

IgG

GenBank Accession Number:

NM_008368.4

GeneID (NCBI):

16185

UNIPROT ID:

P16297

Full Name:

interleukin 2 receptor, beta chain

Calculated MW:

61 kDa

Observed MW:

70 kDa

Purification Method:

Antigen affinity Purification

Recommended Dilutions:

WB 1:500-1:2000

Applications

Tested Applications:

WB, ELISA

Species Specificity:

mouse, rat

Positive Controls:

WB : mouse spleen tissue, mouse thymus tissue, rat spleen tissue, rat thymus tissue

Background Information

The interleukin 2 receptor, which is involved in T cell-mediated immune responses, is present in 3 forms with respect to the ability to bind interleukin 2. The low-affinity form is a monomer of the alpha subunit and is not involved in signal transduction. The intermediate affinity form consists of an alpha/beta subunit heterodimer, while the high affinity form consists of an alpha/beta/gamma subunit heterotrimer. The beta subunit (IL2RB, also known as CD122 and p75) is involved in receptor-mediated endocytosis and transduces the mitogenic signals of interleukin 2.

Storage

Storage:

Store at -20°C. Stable for one year after shipment.

Storage Buffer:

PBS with 0.02% sodium azide and 50% glycerol pH 7.3.

Aliquoting is unnecessary for -20°C storage

*** 20ul sizes contain 0.1% BSA

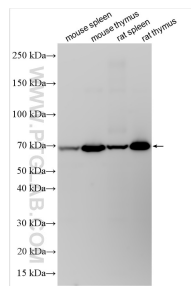
For technical support and original validation data for this product please contact:

T: 1 (888) 4PTGLAB (1-888-478-4522) (toll free in USA), or 1(312) 455-8498 (outside USA)

E: proteintech@ptglab.com
W: ptglab.com

This product is exclusively available under Proteintech Group brand and is not available to purchase from any other manufacturer.

Selected Validation Data



mouse spleen tissue were subjected to SDS PAGE followed by western blot with 32546-1-AP (CD122/IL-2RB antibody) at dilution of 1:1000 incubated at room temperature for 1.5 hours.