

For Research Use Only

KREMEN1 Polyclonal antibody

Catalog Number: 32552-1-AP



Basic Information

Catalog Number:

32552-1-AP

Size:

150ul, Concentration: 500 ug/ml by Nanodrop;

Source:

Rabbit

Isotype:

IgG

Immunogen Catalog Number:

AG37569

GenBank Accession Number:

BC063787

GeneID (NCBI):

83999

UNIPROT ID:

Q96MU8

Full Name:

kringle containing transmembrane protein 1

Calculated MW:

473 aa, 52 kDa

Observed MW:

52 kDa

Purification Method:

Antigen affinity Purification

Recommended Dilutions:

WB 1:500-1:1000

Applications

Tested Applications:

WB, ELISA

Species Specificity:

human

Positive Controls:

WB : HepG2 cells,

Background Information

Kremen protein 1 (KREMEN1, also known as KRM1) is a transmembrane protein that is a negative regulator of the Wnt signaling pathway (PMID: 26206087; 18502762). KREMEN1 is one of the alternative functional receptors that play essential roles in ACE2-independent virus entry, providing insight into SARS-CoV-2 tropism and pathogenesis, as well as a community resource and potential therapeutic strategies for further COVID-19 investigations (PMID: 34837059; 34903854).

Storage

Storage:

Store at -20°C. Stable for one year after shipment.

Storage Buffer:

PBS with 0.02% sodium azide and 50% glycerol pH 7.3.

Aliquoting is unnecessary for -20°C storage

*** 20ul sizes contain 0.1% BSA

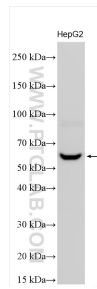
For technical support and original validation data for this product please contact:

T: 1 (888) 4PTGLAB (1-888-478-4522) (toll free in USA), or 1(312) 455-8498 (outside USA)

E: proteintech@ptglab.com
W: ptglab.com

This product is exclusively available under Proteintech Group brand and is not available to purchase from any other manufacturer.

Selected Validation Data



Various lysates were subjected to SDS PAGE followed by western blot with 32552-1-AP (KREMEN1 antibody) at dilution of 1:500 incubated at room temperature for 1.5 hours.