

For Research Use Only

# LRIT2 Polyclonal antibody, PBS Only

Catalog Number: 32565-1-PBS



## Basic Information

**Catalog Number:**

32565-1-PBS

**Size:**

100ug, Concentration: 1 mg/ml by Nanodrop;

**Source:**

Rabbit

**Isotype:**

IgG

**Immunogen Catalog Number:**

AG38495

**GenBank Accession Number:**

BC144475

**GeneID (NCBI):**

340745

**UNIPROT ID:**

A6NDA9

**Full Name:**

leucine-rich repeat, immunoglobulin-like and transmembrane domains 2

**Observed MW:**

60-70 kDa

**Purification Method:**

Antigen affinity Purification

## Applications

**Tested Applications:**

WB, Indirect ELISA

**Species Specificity:**

human, mouse

## Storage

**Storage:**

Store at -80°C.

**Storage Buffer:**

PBS only, pH7.3

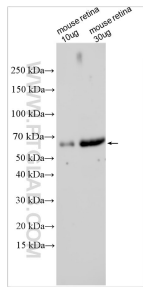
For technical support and original validation data for this product please contact:

T: 1 (888) 4PTGLAB (1-888-478-4522) (toll free in USA), or 1(312) 455-8498 (outside USA)

E: [proteintech@ptglab.com](mailto:proteintech@ptglab.com)  
W: [ptglab.com](http://ptglab.com)

This product is exclusively available under Proteintech Group brand and is not available to purchase from any other manufacturer.

## Selected Validation Data



Various lysates were subjected to SDS PAGE followed by western blot with 32565-1-AP (LRIT2 antibody) at dilution of 1:600 incubated at room temperature for 1.5 hours. This data was developed using the same antibody clone with 32565-1-PBS in a different storage buffer formulation.