

For Research Use Only

WASF1 Polyclonal antibody, PBS Only

Catalog Number: 32584-1-PBS



Basic Information

Catalog Number:

32584-1-PBS

Size:

100ug, Concentration: 1 mg/ml by Nanodrop;

Source:

Rabbit

Isotype:

IgG

Immunogen Catalog Number:

AG38505

GenBank Accession Number:

NM_003931.2

GeneID (NCBI):

8936

UNIPROT ID:

Q92558

Full Name:

WAS protein family, member 1

Calculated MW:

62kDa 559aa

Observed MW:

75 kDa

Purification Method:

Antigen affinity Purification

Applications

Tested Applications:

WB, IP, Indirect ELISA

Species Specificity:

human

Background Information

WASF1 (Wiskott-Aldrich Syndrome Protein Family Member 1) is a gene encoding an actin-binding protein that belongs to the Wiskott-Aldrich syndrome protein family. It is primarily involved in regulating the reorganization of the actin cytoskeleton in cells, and is essential for processes such as cell morphology, motility, and signaling. WASF1 promotes actin polymerization by interacting with the Arp2/3 complex, thereby affecting cell deformation and migration. WASF1 is expressed in a variety of cell types, including tissues such as brain and testis. Its aberrant expression is associated with a variety of diseases, such as tumor invasion and metastasis.

Storage

Storage:

Store at -80°C.

Storage Buffer:

PBS only, pH7.3

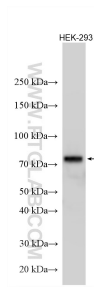
For technical support and original validation data for this product please contact:

T: 1 (888) 4PTGLAB (1-888-478-4522) (toll free in USA), or 1(312) 455-8498 (outside USA)

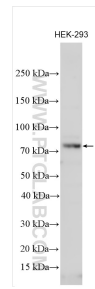
E: proteintech@ptglab.com
W: ptglab.com

This product is exclusively available under Proteintech Group brand and is not available to purchase from any other manufacturer.

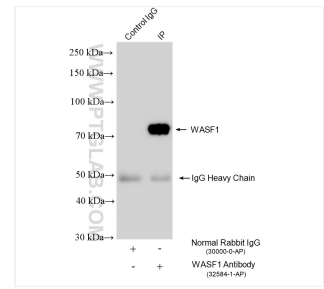
Selected Validation Data



Various lysates were subjected to SDS PAGE followed by western blot with 32584-1-AP (WASF1 antibody) at dilution of 1:2000 incubated at room temperature for 1.5 hours. This data was developed using the same antibody clone with 32584-1-PBS in a different storage buffer formulation.



Various lysates were subjected to SDS PAGE followed by western blot with 32584-1-AP (WASF1 antibody) at dilution of 1:6000 incubated at room temperature for 1.5 hours. This data was developed using the same antibody clone with 32584-1-PBS in a different storage buffer formulation.



IP result of anti-WASF1 (IP:32584-1-AP, 4ug; Detection:32584-1-AP 1:3000) with HEK-293 cells lysate 1800 ug. This data was developed using the same antibody clone with 32584-1-PBS in a different storage buffer formulation.