

For Research Use Only

DCAF16 Polyclonal antibody, PBS Only

Catalog Number: 32592-1-PBS



Basic Information

Catalog Number: 32592-1-PBS	GenBank Accession Number: BC101716	Purification Method: Antigen affinity Purification
Size: 100ug , Concentration: 1 mg/ml by Nanodrop;	GeneID (NCBI): 54876	
Source: Rabbit	UNIPROT ID: Q9NXF7	
Isotype: IgG	Full Name: chromosome 4 open reading frame 30	
Immunogen Catalog Number: AG36770	Calculated MW: 216 aa, 24 kDa	
	Observed MW: 26 kDa	

Applications

Tested Applications:
WB, Indirect ELISA

Species Specificity:
human

Background Information

DCAF16 is a member of the DDB1-CUL4 associated factor (DCAF) family. It is a vital component in the CUL4-DDB1 E3 ubiquitin-protein ligase complex, serving as a crucial substrate recognition element. DCAF16 plays a central role in the ubiquitination and subsequent proteasome-dependent degradation of nuclear proteins.

Storage

Storage:
Store at -80°C.

Storage Buffer:
PBS Only

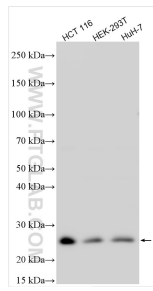
For technical support and original validation data for this product please contact:

T: 1 (888) 4PTGLAB (1-888-478-4522) (toll free in USA), or 1(312) 455-8498 (outside USA)

E: proteintech@ptglab.com
W: ptglab.com

This product is exclusively available under Proteintech Group brand and is not available to purchase from any other manufacturer.

Selected Validation Data



Various lysates were subjected to SDS PAGE followed by western blot with 32592-1-AP (DCAF16 antibody) at dilution of 1:2000 incubated at room temperature for 1.5 hours. This data was developed using the same antibody clone with 32592-1-PBS in a different storage buffer formulation.