

For Research Use Only

# SEC14L2 Polyclonal antibody

Catalog Number: 32593-1-AP



## Basic Information

### Catalog Number:

32593-1-AP

### Size:

150ul, Concentration: 450 ug/ml by Nanodrop;

### Source:

Rabbit

### Isotype:

IgG

### Immunogen Catalog Number:

AG35592

### GenBank Accession Number:

BC058915

### GeneID (NCBI):

23541

### UNIPROT ID:

O76054

### Full Name:

SEC14-like 2 (S. cerevisiae)

### Calculated MW:

46 kDa

### Observed MW:

44 kDa

### Purification Method:

Antigen affinity Purification

### Recommended Dilutions:

WB: 1:2000-1:12000

## Applications

### Tested Applications:

WB, ELISA

### Species Specificity:

human, mouse

### Positive Controls:

WB : HEK-293T cells, RKO cells, fetal human brain tissue, mouse brain tissue, mouse liver tissue

## Background Information

SEC14L2 (SEC14-like lipid-binding protein 2) is a cytoplasmic protein that belongs to the lipid-binding protein family. It plays an important role in a variety of cellular processes, including endosome division and lipid metabolism. SEC14L2 is able to bind phosphatidylinositol (PtdIns) and regulate its intracellular distribution, which is essential for normal endosome division. It has been shown that SEC14L2 regulates the endosome division process by promoting the conversion of PtdIns4P to PtdIns3P. In addition, SEC14L2 plays a role in the cholesterol biosynthesis pathway by stimulating squalene monooxygenase activity. In terms of viral infection, SEC14L2 is essential for hepatitis C virus (HCV) replication, and its expression promotes HCV replication in cells.

## Storage

### Storage:

Store at -20°C. Stable for one year after shipment.

### Storage Buffer:

PBS with 0.02% sodium azide and 50% glycerol, pH7.3

Aliquoting is unnecessary for -20°C storage

\*\*\* 20ul sizes contain 0.1% BSA

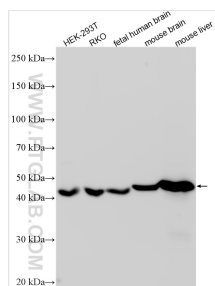
For technical support and original validation data for this product please contact:

T: 1 (888) 4PTGLAB (1-888-478-4522) (toll free in USA), or 1(312) 455-8498 (outside USA)

E: [proteintech@ptglab.com](mailto:proteintech@ptglab.com)  
W: [ptglab.com](http://ptglab.com)

This product is exclusively available under Proteintech Group brand and is not available to purchase from any other manufacturer.

## Selected Validation Data



Various lysates were subjected to SDS PAGE followed by western blot with 32593-1-AP (SEC14L2 antibody) at dilution of 1:6000 incubated at room temperature for 1.5 hours.