

For Research Use Only

GLMN Polyclonal antibody

Catalog Number: 32645-1-AP **1 Publications**



Basic Information

Catalog Number: 32645-1-AP	GenBank Accession Number: BC001257	Purification Method: Antigen affinity Purification
Size: 150ul , Concentration: 450 ug/ml by Nanodrop;	GeneID (NCBI): 11146	Recommended Dilutions: WB: 1:1000-1:4000 IF/ICC: 1:50-1:500
Source: Rabbit	UNIPROT ID: Q92990	
Isotype: IgG	Full Name: glomulin, FKBP associated protein	
Immunogen Catalog Number: AG37763	Calculated MW: 68 kDa	
	Observed MW: 68 kDa	

Applications

Tested Applications: WB, IF/ICC, ELISA	Positive Controls: WB : HEK-293T cells, HepG2 cells, Jurkat cells, mouse retina tissue, rat eye tissue IF/ICC : HeLa cells,
Cited Applications: WB	
Species Specificity: human, mouse, rat	
Cited Species: mouse	

Background Information

Glomulin (GLMN) is a regulatory component of cullin-RING-based SCF (SKP1-Cullin-F-box protein) E3 ubiquitin-protein ligase complexes (PMID: 22405651; 22748924). It inhibits E3 ubiquitin ligase activity by binding to RBX1 (via the RING domain) and inhibiting its interaction with the E2 ubiquitin-conjugating enzyme CDC34 (PMID: 22405651; 22748924). GLMN is essential for normal vasculature development and contributes to the regulation of RPS6KB1 phosphorylation (PMID: 11845407; 11571281).

Notable Publications

Author	Pubmed ID	Journal	Application
Jingze Cong	40943170	Int J Mol Sci	WB

Storage

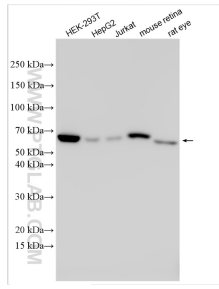
Storage:
Store at -20°C. Stable for one year after shipment.
Storage Buffer:
PBS with 0.02% sodium azide and 50% glycerol, pH7.3
Aliquoting is unnecessary for -20°C storage

*** 20ul sizes contain 0.1% BSA

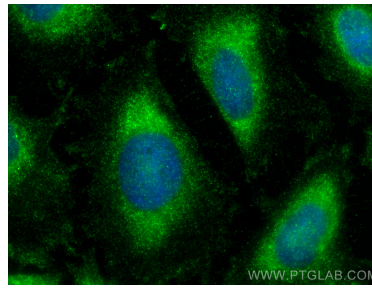
For technical support and original validation data for this product please contact:
T: 1 (888) 4PTGLAB (1-888-478-4522) (toll free in USA), or 1(312) 455-8498 (outside USA)
E: proteintech@ptglab.com
W: ptglab.com

This product is exclusively available under Proteintech Group brand and is not available to purchase from any other manufacturer.

Selected Validation Data



Various lysates were subjected to SDS PAGE followed by western blot with 32645-1-AP (GLMN antibody) at dilution of 1:2000 incubated at room temperature for 1.5 hours.



Immunofluorescent analysis of (-20°C Ethanol) fixed HeLa cells using GLMN antibody (32645-1-AP) at dilution of 1:200 and CoraLite® 488-Conjugated Goat Anti-Rabbit IgG(H+L) (SA00013-2).