

For Research Use Only

# GLMN Polyclonal antibody, PBS Only

Catalog Number: 32645-1-PBS



## Basic Information

<b>Catalog Number:</b> 32645-1-PBS	<b>GenBank Accession Number:</b> BC001257	<b>Purification Method:</b> Antigen affinity Purification
<b>Size:</b> 100ug , Concentration: 1 mg/ml by Nanodrop;	<b>GeneID (NCBI):</b> 11146	
<b>Source:</b> Rabbit	<b>UNIPROT ID:</b> Q92990	
<b>Isotype:</b> IgG	<b>Full Name:</b> glomulin, FKBP associated protein	
<b>Immunogen Catalog Number:</b> AG37763	<b>Calculated MW:</b> 68 kDa	
	<b>Observed MW:</b> 68 kDa	

## Applications

**Tested Applications:**  
WB, Indirect ELISA

**Species Specificity:**  
human, mouse, rat

## Background Information

Glomulin (GLMN) is a regulatory component of cullin-RING-based SCF (SKP1-Cullin-F-box protein) E3 ubiquitin-protein ligase complexes (PMID: 22405651; 22748924). It inhibits E3 ubiquitin ligase activity by binding to RBX1 (via the RING domain) and inhibiting its interaction with the E2 ubiquitin-conjugating enzyme CDC34 (PMID: 22405651; 22748924). GLMN is essential for normal vasculature development and contributes to the regulation of RPS6KB1 phosphorylation (PMID: 11845407; 11571281).

## Storage

**Storage:**  
Store at -80°C.

**Storage Buffer:**  
PBS only, pH7.3

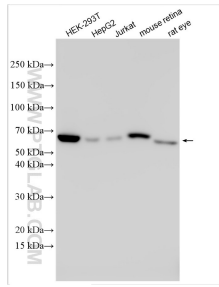
For technical support and original validation data for this product please contact:

T: 1 (888) 4PTGLAB (1-888-478-4522) (toll free in USA), or 1(312) 455-8498 (outside USA)

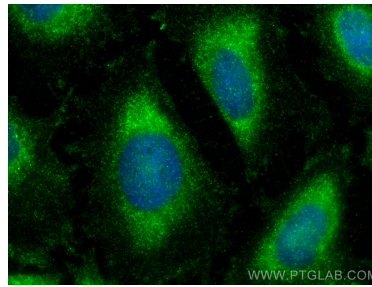
E: [proteintech@ptglab.com](mailto:proteintech@ptglab.com)  
W: [ptglab.com](http://ptglab.com)

**This product is exclusively available under Proteintech Group brand and is not available to purchase from any other manufacturer.**

## Selected Validation Data



Various lysates were subjected to SDS PAGE followed by western blot with 32645-1-AP (GLMN antibody) at dilution of 1:2000 incubated at room temperature for 1.5 hours. This data was developed using the same antibody clone with 32645-1-PBS in a different storage buffer formulation.



Immunofluorescent analysis of (-20°C Ethanol) fixed HeLa cells using GLMN antibody (32645-1-AP) at dilution of 1:200 and CoraLite® 488-Conjugated Goat Anti-Rabbit IgG(H+L) (SA00013-2). This data was developed using the same antibody clone with 32645-1-PBS in a different storage buffer formulation.