

For Research Use Only

# SLAM/CD150 Polyclonal antibody

Catalog Number: 32660-1-AP



## Basic Information

**Catalog Number:**

32660-1-AP

**Size:**

150ul , Concentration: 600 ug/ml by Nanodrop;

**Source:**

Rabbit

**Isotype:**

IgG

**Immunogen Catalog Number:**

EG2787

**GenBank Accession Number:**

NM\_013730.4

**GeneID (NCBI):**

27218

**UNIPROT ID:**

Q9QUM4-1

**Full Name:**

signaling lymphocytic activation molecule family member 1

**Calculated MW:**

38 kDa

**Observed MW:**

70-90 kDa

**Purification Method:**

Antigen affinity purification

**Recommended Dilutions:**

WB: 1:500-1:1000

## Applications

**Tested Applications:**

WB, ELISA

**Species Specificity:**

mouse

**Positive Controls:**

WB : mouse spleen tissue, mouse thymus tissue

## Background Information

Signaling lymphocytic activation molecule (SLAM, also known as SLAMF1 or CD150) is a 70-95 kDa transmembrane glycoprotein that belongs to the immunoglobulin gene superfamily. SLAM is constitutively expressed on peripheral blood memory T-cells, T-cell clones, immature thymocytes and a proportion of B-cells, and is rapidly induced on naive T-cells after activation. SLAM is involved in T cell stimulation and cytokine production, and may play an important role in the regulation of immune responses to pathogens.

## Storage

**Storage:**

Store at -20°C. Stable for one year after shipment.

**Storage Buffer:**

PBS with 0.02% sodium azide and 50% glycerol, pH7.3

Aliquoting is unnecessary for -20°C storage

\*\*\* 20ul sizes contain 0.1% BSA

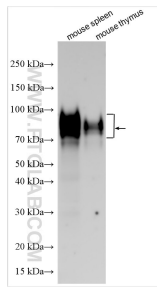
For technical support and original validation data for this product please contact:

T: 1 (888) 4PTGLAB (1-888-478-4522) (toll free in USA), or 1(312) 455-8498 (outside USA)

E: [proteintech@ptglab.com](mailto:proteintech@ptglab.com)  
W: [ptglab.com](http://ptglab.com)

This product is exclusively available under Proteintech Group brand and is not available to purchase from any other manufacturer.

## Selected Validation Data



Various lysates were subjected to SDS PAGE followed by western blot with 32660-1-AP (SLAM/CD150 antibody) at dilution of 1:800 incubated at room temperature for 1.5 hours.