

For Research Use Only

KLHL7 Polyclonal antibody

Catalog Number: 32697-1-AP



Basic Information

Catalog Number: 32697-1-AP	GenBank Accession Number: BC039585	Purification Method: Antigen affinity Purification
Size: 150ul , Concentration: 500 ug/ml by Nanodrop;	GeneID (NCBI): 55975	Recommended Dilutions: WB: 1:500-1:1000
Source: Rabbit	UNIPROT ID: Q8IXQ5	
Isotype: IgG	Full Name: kelch-like 7 (Drosophila)	
Immunogen Catalog Number: AG38050	Calculated MW: 586 aa, 66 kDa	
	Observed MW: 65 kDa	

Applications

Tested Applications:
WB, ELISA

Species Specificity:
human, mouse, rat

Positive Controls:
WB : mouse brain tissue, mouse cerebellum tissue, mouse testis tissue, rat brain tissue, rat cerebellum tissue, HeLa cells, HepG2 cells

Background Information

KLHL7 (Kelch-like protein 7) is a member of the Kelch-like protein family and plays significant roles in various biological processes, including cell cycle regulation, protein degradation, and cytoskeleton organization. KLHL7 is highly expressed in various cancers and is associated with malignant progression and poor prognosis. In breast cancer, high expression of KLHL7 is linked to higher histological grades, estrogen receptor (ER)-negative or human epidermal growth factor receptor 2 (HER-2)-positive tumors, and triple-negative breast cancer (TNBC), and patients with high KLHL7 expression have shorter survival times. In gastric cancer, silencing KLHL7 gene expression can inhibit the proliferation, migration, and invasion of gastric cancer cells and has shown tumor-suppressive effects in vivo models. Moreover, KLHL7 is highly expressed in colorectal cancer and ovarian cancer, among others, and is significantly associated with low patient survival rates.

Storage

Storage:
Store at -20°C. Stable for one year after shipment.

Storage Buffer:
PBS with 0.02% sodium azide and 50% glycerol, pH7.3

Aliquoting is unnecessary for -20°C storage

*** 20ul sizes contain 0.1% BSA

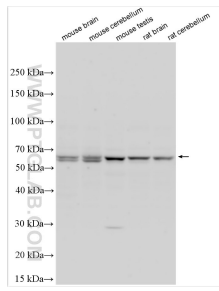
For technical support and original validation data for this product please contact:

T: 1 (888) 4PTGLAB (1-888-478-4522) (toll free in USA), or 1(312) 455-8498 (outside USA)

E: proteintech@ptglab.com
W: ptglab.com

This product is exclusively available under Proteintech Group brand and is not available to purchase from any other manufacturer.

Selected Validation Data



Various lysates were subjected to SDS PAGE followed by western blot with 32697-1-AP (KLHL7 antibody) at dilution of 1:800 incubated at room temperature for 1.5 hours.