

For Research Use Only

# KLHL7 Polyclonal antibody, PBS Only

Catalog Number: 32697-1-PBS



## Basic Information

**Catalog Number:**

32697-1-PBS

**Size:**

100ug, Concentration: 1 mg/ml by Nanodrop;

**Source:**

Rabbit

**Isotype:**

IgG

**Immunogen Catalog Number:**

AG38050

**GenBank Accession Number:**

BC039585

**GeneID (NCBI):**

55975

**UNIPROT ID:**

Q8IXQ5

**Full Name:**

kelch-like 7 (Drosophila)

**Calculated MW:**

586 aa, 66 kDa

**Observed MW:**

65 kDa

**Purification Method:**

Antigen affinity Purification

## Applications

**Tested Applications:**

WB, Indirect ELISA

**Species Specificity:**

human, mouse, rat

## Background Information

KLHL7 (Kelch-like protein 7) is a member of the Kelch-like protein family and plays significant roles in various biological processes, including cell cycle regulation, protein degradation, and cytoskeleton organization. KLHL7 is highly expressed in various cancers and is associated with malignant progression and poor prognosis. In breast cancer, high expression of KLHL7 is linked to higher histological grades, estrogen receptor (ER)-negative or human epidermal growth factor receptor 2 (HER-2)-positive tumors, and triple-negative breast cancer (TNBC), and patients with high KLHL7 expression have shorter survival times. In gastric cancer, silencing KLHL7 gene expression can inhibit the proliferation, migration, and invasion of gastric cancer cells and has shown tumor-suppressive effects in in vivo models. Moreover, KLHL7 is highly expressed in colorectal cancer and ovarian cancer, among others, and is significantly associated with low patient survival rates.

## Storage

**Storage:**

Store at -80°C.

**Storage Buffer:**

PBS only

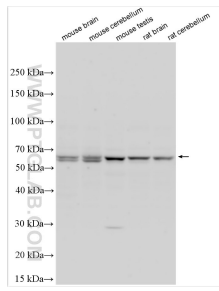
For technical support and original validation data for this product please contact:

T: 1 (888) 4PTGLAB (1-888-478-4522) (toll free in USA), or 1(312) 455-8498 (outside USA)

E: [proteintech@ptglab.com](mailto:proteintech@ptglab.com)  
W: [ptglab.com](http://ptglab.com)

**This product is exclusively available under Proteintech Group brand and is not available to purchase from any other manufacturer.**

## Selected Validation Data



Various lysates were subjected to SDS PAGE followed by western blot with 32697-1-AP (KLHL7 antibody) at dilution of 1:800 incubated at room temperature for 1.5 hours. This data was developed using the same antibody clone with 32697-1-PBS in a different storage buffer formulation.