

For Research Use Only

ORAOV1 Polyclonal antibody

Catalog Number: 32706-1-AP



Basic Information

Catalog Number: 32706-1-AP	GenBank Accession Number: NM_153451.2	Purification Method: Antigen affinity Purification
Size: 150ul , Concentration: 450 ug/ml by Nanodrop;	GeneID (NCBI): 220064	Recommended Dilutions: IP: 0.5-4.0 ug for 1.0-3.0 mg of total protein lysate
Source: Rabbit	UNIPROT ID: Q8WV07	
Isotype: IgG	Full Name: oral cancer overexpressed 1	
Immunogen Catalog Number: AG38523	Calculated MW: 15kDa 137aa	
	Observed MW: 16 kDa	

Applications

Tested Applications: IP, ELISA	Positive Controls: IP: A431 cells,
Species Specificity: human	

Background Information

ORAOV1 (oral cancer overexpressed 1) is a candidate proto-oncogene that is frequently amplified and overexpressed in various human squamous cell carcinomas (SCCs), including oral, esophageal, and cervical cancers. In cervical cancer, silencing of ORAOV1 significantly inhibits the growth of HeLa cells by causing S-phase cell cycle arrest and activating apoptosis. Additionally, ORAOV1 is overexpressed in a variety of solid tumors and may promote tumor development by preventing ribosomal damage induced by reactive oxygen species (ROS). Therefore, ORAOV1 is not only an important tumor biomarker but also a potential therapeutic target for multiple cancers.

Storage

Storage:
Store at -20°C. Stable for one year after shipment.
Storage Buffer:
PBS with 0.02% sodium azide and 50% glycerol, pH7.3
Aliquoting is unnecessary for -20°C storage

*** 20ul sizes contain 0.1% BSA

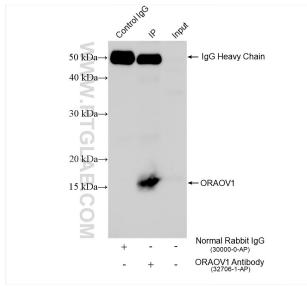
For technical support and original validation data for this product please contact:

T: 1 (888) 4PTGLAB (1-888-478-4522) (toll free in USA), or 1(312) 455-8498 (outside USA)

E: proteintech@ptglab.com
W: ptglab.com

This product is exclusively available under Proteintech Group brand and is not available to purchase from any other manufacturer.

Selected Validation Data



IP result of anti-ORAOV1 (IP:32706-1-AP, 4ug;
Detection:32706-1-AP 1:500) with A431 cells lysate
1120 ug.