

For Research Use Only

ATP1B1 Polyclonal antibody

Catalog Number: 32764-1-AP **1 Publications**



Basic Information

Catalog Number: 32764-1-AP	GenBank Accession Number: NM_009721.6	Purification Method: Antigen affinity Purification
Size: 150ul , Concentration: 400 ug/ml by Nanodrop;	GeneID (NCBI): 11931	Recommended Dilutions: WB: 1:5000-1:50000 IHC: 1:500-1:2000
Source: Rabbit	UNIPROT ID: P14094	
Isotype: IgG	Full Name: ATPase, Na ⁺ /K ⁺ transporting, beta 1 polypeptide	
Immunogen Catalog Number: EG3007	Calculated MW: 35 kDa	
	Observed MW: 40-50 kDa	

Applications

Tested Applications: WB, IHC, ELISA	Positive Controls: WB : fetal human brain tissue, mouse brain tissue, mouse liver tissue, rat brain tissue, rat heart tissue, mouse heart tissue
Cited Applications: WB	IHC : mouse liver tissue, mouse brain tissue
Species Specificity: human, mouse, rat	
Cited Species: mouse	

Note-IHC: suggested antigen retrieval with TE buffer pH 9.0; (*) Alternatively, antigen retrieval may be performed with citrate buffer pH 6.0

Background Information

ATP1B1 is one of beta subunits of the Na⁺/K⁺ ATPase and responsible for formation and structural integrity of the Na⁺/K⁺ ATPase. The Na⁺/K⁺ ATPase is a plasma membrane pump consisting of alpha, beta, and gamma subunits. At least four of Na⁺/K⁺-ATPase beta subunits (β1, β2, β3, β4) have been identified in mammalian cells; the β1-subunit (ATP1B1) is the most ubiquitous. The Na⁺/K⁺ ATPase β subunits have multiple N-glycosylation sites. The predicted MW of ATP1B1 is 35 kDa, while it migrates around 40-52 kDa due to the variable glycosylation. (PMID: 10896885, 17714085)

Notable Publications

Author	Pubmed ID	Journal	Application
Tae-Sik Nam	41085209	FASEB J	WB

Storage

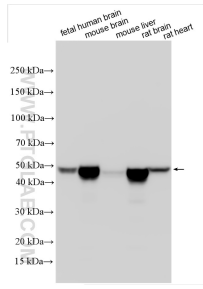
Storage:
Store at -20°C. Stable for one year after shipment.
Storage Buffer:
PBS with 0.02% sodium azide and 50% glycerol, pH7.3
Aliquoting is unnecessary for -20°C storage

***** 20ul sizes contain 0.1% BSA**

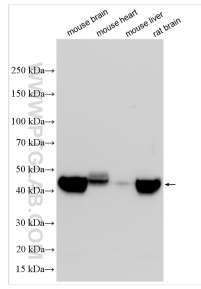
For technical support and original validation data for this product please contact:
T: 1 (888) 4PTGLAB (1-888-478-4522) (toll free in USA), or 1(312) 455-8498 (outside USA)
E: proteintech@ptglab.com
W: ptglab.com

This product is exclusively available under Proteintech Group brand and is not available to purchase from any other manufacturer.

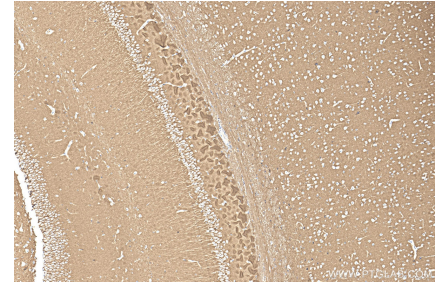
Selected Validation Data



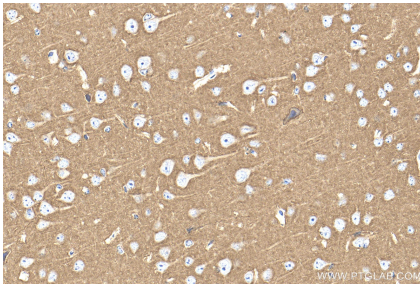
Various lysates were subjected to SDS PAGE followed by western blot with 32764-1-AP (ATP1B1 antibody) at dilution of 1:10000 incubated at room temperature for 1.5 hours.



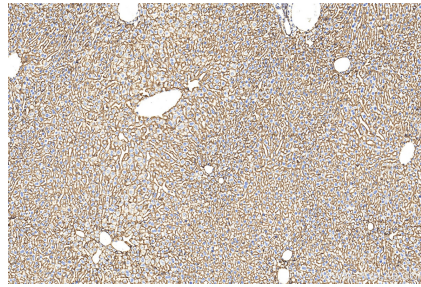
Various lysates were subjected to SDS PAGE followed by western blot with 32764-1-AP (ATP1B1 antibody) at dilution of 1:10000 incubated at room temperature for 1.5 hours.



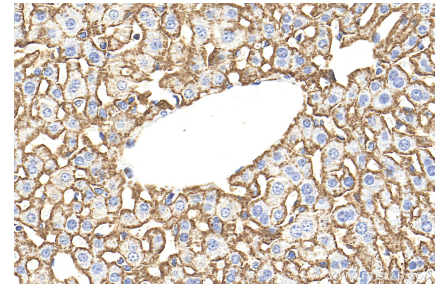
Immunohistochemical analysis of paraffin-embedded mouse brain tissue slide using 32764-1-AP (ATP1B1 antibody) at dilution of 1:1000 (under 10x lens). Heat mediated antigen retrieval with Tris-EDTA buffer (pH 9.0).



Immunohistochemical analysis of paraffin-embedded mouse brain tissue slide using 32764-1-AP (ATP1B1 antibody) at dilution of 1:1000 (under 40x lens). Heat mediated antigen retrieval with Tris-EDTA buffer (pH 9.0).



Immunohistochemical analysis of paraffin-embedded mouse liver tissue slide using 32764-1-AP (ATP1B1 antibody) at dilution of 1:1000 (under 10x lens). Heat mediated antigen retrieval with Tris-EDTA buffer (pH 9.0).



Immunohistochemical analysis of paraffin-embedded mouse liver tissue slide using 32764-1-AP (ATP1B1 antibody) at dilution of 1:1000 (under 40x lens). Heat mediated antigen retrieval with Tris-EDTA buffer (pH 9.0).