

For Research Use Only

FDX1L Polyclonal antibody, PBS Only

Catalog Number:32790-1-PBS



Basic Information

Catalog Number: 32790-1-PBS	GenBank Accession Number: BC063460	Purification Method: Antigen affinity Purification
Size: 100ug , Concentration: 1 mg/ml by Nanodrop;	GeneID (NCBI): 112812	
Source: Rabbit	UNIPROT ID: Q6P4F2	
Isotype: IgG	Full Name: ferredoxin 1-like	
Immunogen Catalog Number: AG37104	Calculated MW: 183 aa, 20 kDa	
	Observed MW: 21 kDa	

Applications

Tested Applications:
WB, Indirect ELISA

Species Specificity:
human, mouse, rat

Background Information

FDX1L (ferredoxin 1-like) is a gene encoding mitochondrial protein whose primary function is to participate in the biosynthesis of iron-sulfur clusters (Fe-S clusters). FDX1L is closely related to the assembly of iron-sulfur clusters and is the second component in the biosynthesis mechanism of iron-sulfur clusters. Studies have shown that FDX1L is widely expressed in human cells, especially in the central nervous system. In addition, mutations in FDX1L can lead to mitochondrial myopathy, manifested by a significant reduction in the activity of respiratory chain complexes I, II, and III. The function of FDX1L is different from that of FDX1 (ferredoxin 1). FDX1 is mainly involved in the synthesis of steroid hormones, while FDX1L focuses on the biosynthesis of iron-sulfur clusters. This functional difference allows FDX1L to play an important role in maintaining homeostasis of iron-sulfur clusters in the cell.

Storage

Storage:
Store at -80°C.

Storage Buffer:
PBS only, pH7.3

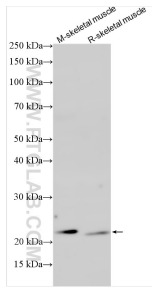
For technical support and original validation data for this product please contact:

T: 1 (888) 4PTGLAB (1-888-478-4522) (toll free in USA), or 1(312) 455-8498 (outside USA)

E: proteintech@ptglab.com
W: ptglab.com

This product is exclusively available under Proteintech Group brand and is not available to purchase from any other manufacturer.

Selected Validation Data



Various lysates were subjected to SDS PAGE followed by western blot with 32790-1-AP (FDX1L antibody) at dilution of 1:2000 incubated at room temperature for 1.5 hours. This data was developed using the same antibody clone with 32790-1-PBS in a different storage buffer formulation.