

For Research Use Only

ELL2 Polyclonal antibody

Catalog Number: 32800-1-AP

Featured Product



Basic Information

Catalog Number:

32800-1-AP

Size:

150ul, Concentration: 430 ug/ml by Nanodrop;

Source:

Rabbit

Isotype:

IgG

Immunogen Catalog Number:

AG39224

GenBank Accession Number:

BC028412

GeneID (NCBI):

22936

UNIPROT ID:

O00472

Full Name:

elongation factor, RNA polymerase II, 2

Calculated MW:

640 aa, 72 kDa

Observed MW:

80-90 kDa

Purification Method:

Antigen affinity purification

Recommended Dilutions:

WB: 1:1000-1:8000

Applications

Tested Applications:

WB, ELISA

Species Specificity:

human

Positive Controls:

WB : HeLa cells, HepG2 cells

Background Information

ELL2 (Elongation Factor for RNA Polymerase II 2) is a key transcriptional elongation factor that regulates RNA polymerase II (Pol II) during mRNA synthesis (PMID: 34265249). It belongs to the ELL gene family, which includes ELL1, ELL2, and ELL3, and plays a crucial role in controlling the elongation phase of transcription (PMID: 9108030). ELL2 is an androgen-responsive gene that is expressed by prostate epithelial cells and is frequently down-regulated in prostate cancer (PMID: 29179998). The predicted molecular weight of the ELL2 protein is 72 kDa, but due to post-translational modifications, its molecular weight is approximately 90 kDa. (PMID: 39582094, PMID: 34948391)

Storage

Storage:

Store at -20°C. Stable for one year after shipment.

Storage Buffer:

PBS with 0.02% sodium azide and 50% glycerol, pH7.3

Aliquoting is unnecessary for -20°C storage

*** 20ul sizes contain 0.1% BSA

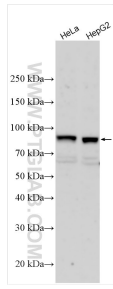
For technical support and original validation data for this product please contact:

T: 1 (888) 4PTGLAB (1-888-478-4522) (toll free in USA), or 1(312) 455-8498 (outside USA)

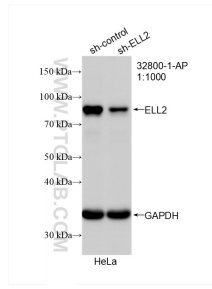
E: proteintech@ptglab.com
W: ptglab.com

This product is exclusively available under Proteintech Group brand and is not available to purchase from any other manufacturer.

Selected Validation Data



Various lysates were subjected to SDS PAGE followed by western blot with 32800-1-AP (ELL2 antibody) at dilution of 1:4000 incubated at room temperature for 1.5 hours.



WB result of ELL2 antibody (32800-1-AP; 1:1000; incubated at room temperature for 1.5 hours) with sh-Control and sh-ELL2 transfected HeLa cells.