

For Research Use Only

MEP1B Polyclonal antibody

Catalog Number: 32828-1-AP



Basic Information

Catalog Number: 32828-1-AP	GenBank Accession Number: NM_001308171.1	Purification Method: Antigen affinity Purification
Size: 150ul , Concentration: 450 ug/ml by Nanodrop;	GeneID (NCBI): 4225	Recommended Dilutions: WB: 1:500-1:2000
Source: Rabbit	UNIPROT ID: Q16820	
Isotype: IgG	Full Name: meprin A, beta	
	Calculated MW: 80 kDa	
	Observed MW: 100 kDa	

Applications

Tested Applications: WB, ELISA	Positive Controls: WB : COLO 320 cells, mouse small intestine tissue
Species Specificity: human, mouse	

Background Information

MEP1B, also known as meprin A subunit beta, is a gene that encodes a metalloprotease belonging to the Astacins family of zinc endopeptidases. The MEP1B gene is highly expressed in the small intestine and duodenum, and it is also expressed in the kidneys, leukocytes, and certain cancer cells. MEP1B encodes a metalloprotease that plays a key role in the hydrolysis of various substrates, including collagen, laminin, and elastin, which are major components of the extracellular matrix. This function is crucial for tissue development, repair, and remodeling.

Storage

Storage:
Store at -20°C. Stable for one year after shipment.
Storage Buffer:
PBS with 0.02% sodium azide and 50% glycerol, pH7.3
Aliquoting is unnecessary for -20°C storage

*** 20ul sizes contain 0.1% BSA

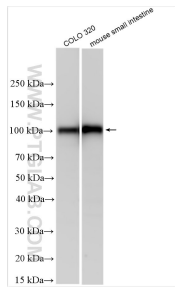
For technical support and original validation data for this product please contact:

T: 1 (888) 4PTGLAB (1-888-478-4522) (toll free in USA), or 1(312) 455-8498 (outside USA)

E: proteintech@ptglab.com
W: ptglab.com

This product is exclusively available under Proteintech Group brand and is not available to purchase from any other manufacturer.

Selected Validation Data



Various lysates were subjected to SDS PAGE followed by western blot with 32828-1-AP (MEP1B antibody) at dilution of 1:1000 incubated at room temperature for 1.5 hours.