

For Research Use Only

MEP1B Polyclonal antibody, PBS Only

Catalog Number: 32828-1-PBS



Basic Information

Catalog Number:

32828-1-PBS

Size:

100ug, Concentration: 1 mg/ml by Nanodrop;

Source:

Rabbit

Isotype:

IgG

GenBank Accession Number:

NM_001308171.1

GeneID (NCBI):

4225

UNIPROT ID:

Q16820

Full Name:

meprin A, beta

Calculated MW:

80 kDa

Observed MW:

100 kDa

Purification Method:

Antigen affinity Purification

Applications

Tested Applications:

WB, Indirect ELISA

Species Specificity:

human, mouse

Background Information

MEP1B, also known as meprin A subunit beta, is a gene that encodes a metalloprotease belonging to the Astacins family of zinc endopeptidases. The MEP1B gene is highly expressed in the small intestine and duodenum, and it is also expressed in the kidneys, leukocytes, and certain cancer cells. MEP1B encodes a metalloprotease that plays a key role in the hydrolysis of various substrates, including collagen, laminin, and elastin, which are major components of the extracellular matrix. This function is crucial for tissue development, repair, and remodeling.

Storage

Storage:

Store at -80°C.

Storage Buffer:

PBS only

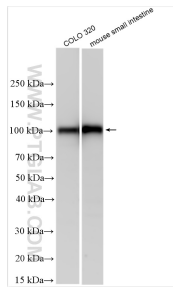
For technical support and original validation data for this product please contact:

T: 1 (888) 4PTGLAB (1-888-478-4522) (toll free in USA), or 1(312) 455-8498 (outside USA)

E: proteintech@ptglab.com
W: ptglab.com

This product is exclusively available under Proteintech Group brand and is not available to purchase from any other manufacturer.

Selected Validation Data



Various lysates were subjected to SDS PAGE followed by western blot with 32828-1-AP (MEP1B antibody) at dilution of 1:1000 incubated at room temperature for 1.5 hours. This data was developed using the same antibody clone with 32828-1-PBS in a different storage buffer formulation.