

For Research Use Only

CATSPERE Polyclonal antibody

Catalog Number:32840-1-AP



Basic Information

Catalog Number: 32840-1-AP	GenBank Accession Number: BC032859	Purification Method: Antigen affinity Purification
Size: 150ul , Concentration: 350 ug/ml by Nanodrop;	GeneID (NCBI): 257044	Recommended Dilutions: WB: 1:500-1:2000
Source: Rabbit	UNIPROT ID: Q5SY80	
Isotype: IgG	Full Name: chromosome 1 open reading frame 101	
Immunogen Catalog Number: AG36791	Calculated MW: 110 kDa	
	Observed MW: 110 kDa	

Applications

Tested Applications:

WB, ELISA

Species Specificity:

human, mouse, rat

Positive Controls:

WB : A549 cells, HepG2 cells, mouse liver tissue, rat liver tissue

Background Information

Cation channel sperm-associated auxiliary subunit epsilon (CATSPERE) is a critical component of the CatSper calcium channel complex, essential for sperm function and male fertility. CATSPERE interacts with the pore-forming subunits and contributes to the stability and function of the entire CatSper complex (PMID: 39605618). This complex is crucial for sperm capacitation, which includes the development of hyperactivated motility and the acrosome reaction, necessary for successful fertilization (PMID: 17330112; 18508611; 29707693).

Storage

Storage:

Store at -20°C. Stable for one year after shipment.

Storage Buffer:

PBS with 0.02% sodium azide and 50% glycerol, pH7.3

Aliquoting is unnecessary for -20°C storage

*** 20ul sizes contain 0.1% BSA

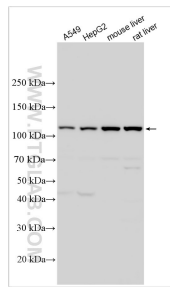
For technical support and original validation data for this product please contact:

T: 1 (888) 4PTGLAB (1-888-478-4522) (toll free in USA), or 1(312) 455-8498 (outside USA)

E: proteintech@ptglab.com
W: ptglab.com

This product is exclusively available under Proteintech Group brand and is not available to purchase from any other manufacturer.

Selected Validation Data



Various lysates were subjected to SDS PAGE followed by western blot with 32840-1-AP (CATSPERE antibody) at dilution of 1:1000 incubated at room temperature for 1.5 hours.