

For Research Use Only

# CATSPERE Polyclonal antibody, PBS Only

Catalog Number: 32840-1-PBS



## Basic Information

**Catalog Number:**

32840-1-PBS

**Size:**

100ug, Concentration: 1 mg/ml by Nanodrop;

**Source:**

Rabbit

**Isotype:**

IgG

**Immunogen Catalog Number:**

AG36791

**GenBank Accession Number:**

BC032859

**GeneID (NCBI):**

257044

**UNIPROT ID:**

Q5SY80

**Full Name:**

chromosome 1 open reading frame 101

**Calculated MW:**

110 kDa

**Observed MW:**

110 kDa

**Purification Method:**

Antigen affinity Purification

## Applications

**Tested Applications:**

WB, Indirect ELISA

**Species Specificity:**

human, mouse, rat

## Background Information

Cation channel sperm-associated auxiliary subunit epsilon (CATSPERE) is a critical component of the CatSper calcium channel complex, essential for sperm function and male fertility. CATSPERE interacts with the pore-forming subunits and contributes to the stability and function of the entire CatSper complex (PMID: 39605618). This complex is crucial for sperm capacitation, which includes the development of hyperactivated motility and the acrosome reaction, necessary for successful fertilization (PMID: 17330112; 18508611; 29707693).

## Storage

**Storage:**

Store at -80°C.

**Storage Buffer:**

PBS only

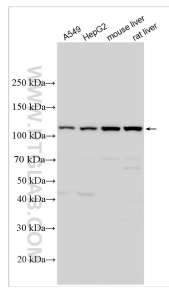
For technical support and original validation data for this product please contact:

T: 1 (888) 4PTGLAB (1-888-478-4522) (toll free in USA), or 1(312) 455-8498 (outside USA)

E: [proteintech@ptglab.com](mailto:proteintech@ptglab.com)  
W: [ptglab.com](http://ptglab.com)

**This product is exclusively available under Proteintech Group brand and is not available to purchase from any other manufacturer.**

## Selected Validation Data



Various lysates were subjected to SDS PAGE followed by western blot with 32840-1-AP (CATSPERE antibody) at dilution of 1:1000 incubated at room temperature for 1.5 hours. This data was developed using the same antibody clone with 32840-1-PBS in a different storage buffer formulation.