

For Research Use Only

SELENOO Polyclonal antibody, PBS Only

Catalog Number: 32860-1-PBS



Basic Information

Catalog Number: 32860-1-PBS	GenBank Accession Number: BC110866	Purification Method: Antigen affinity Purification
Size: 100ug , Concentration: 1 mg/ml by Nanodrop;	GeneID (NCBI): 83642	
Source: Rabbit	UNIPROT ID: Q9BVL4	
Isotype: IgG	Full Name: selenoprotein O	
Immunogen Catalog Number: AG35939	Observed MW: 70 kDa	

Applications

Tested Applications:
WB, IHC, Indirect ELISA

Species Specificity:
human

Background Information

SELENOO (Selenoprotein O) is a selenocysteine-containing (Sec) selenoprotein belonging to the oxidoreductase family, which is mainly localized in the endoplasmic reticulum (ER) membranes with multiple transmembrane structural domains. SELENOO plays important roles in a variety of cellular processes, including redox homeostasis and lipid metabolism and DNA damage repair. It plays an important role in a variety of cellular processes, including redox homeostasis, lipid metabolism, and DNA damage repair. SELENOO is aberrantly expressed in a variety of diseases, including cancer and neurodegenerative diseases. For example, in melanoma and lung cancer, the upregulation of SELENOO expression is associated with tumor progression and metastasis, which has become a hot topic in current research.

Storage

Storage:
Store at -80°C.

Storage Buffer:
PBS only, pH7.3

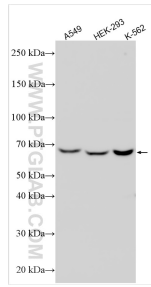
For technical support and original validation data for this product please contact:

T: 1 (888) 4PTGLAB (1-888-478-4522) (toll free in USA), or 1(312) 455-8498 (outside USA)

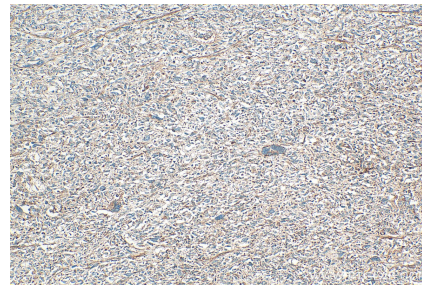
E: proteintech@ptglab.com
W: ptglab.com

This product is exclusively available under Proteintech Group brand and is not available to purchase from any other manufacturer.

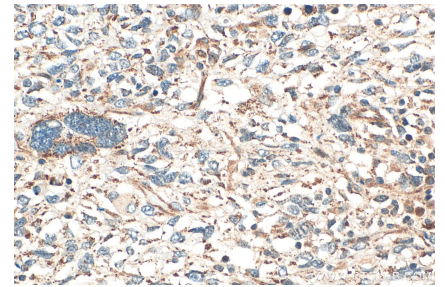
Selected Validation Data



Various lysates were subjected to SDS PAGE followed by western blot with 32860-1-AP (RP3-402G11.5 antibody) at dilution of 1:2500 incubated at room temperature for 1.5 hours. This data was developed using the same antibody clone with 32860-1-PBS in a different storage buffer formulation.



Immunohistochemical analysis of paraffin-embedded human pancreas cancer tissue slide using 32860-1-AP (SELENOO antibody) at dilution of 1:200 (under 10x lens). Heat mediated antigen retrieval with Tris-EDTA buffer (pH 9.0). This data was developed using the same antibody clone with 32860-1-PBS in a different storage buffer formulation.



Immunohistochemical analysis of paraffin-embedded human pancreas cancer tissue slide using 32860-1-AP (SELENOO antibody) at dilution of 1:200 (under 40x lens). Heat mediated antigen retrieval with Tris-EDTA buffer (pH 9.0). This data was developed using the same antibody clone with 32860-1-PBS in a different storage buffer formulation.