

For Research Use Only

# TXNDC15 Polyclonal antibody

Catalog Number: 32874-1-AP

Featured Product



## Basic Information

<b>Catalog Number:</b> 32874-1-AP	<b>GenBank Accession Number:</b> BC032568	<b>Purification Method:</b> Antigen affinity Purification
<b>Size:</b> 150ul , Concentration: 250 ug/ml by Nanodrop;	<b>GeneID (NCBI):</b> 79770	<b>Recommended Dilutions:</b> WB: 1:1000-1:6000 IHC: 1:300-1:1200
<b>Source:</b> Rabbit	<b>UNIPROT ID:</b> Q96J42	
<b>Isotype:</b> IgG	<b>Full Name:</b> thioredoxin domain containing 15	
<b>Immunogen Catalog Number:</b> AG37138	<b>Observed MW:</b> 55 kDa	

## Applications

### Tested Applications:

WB, IHC, ELISA

### Species Specificity:

human

**Note-IHC: suggested antigen retrieval with TE buffer pH 9.0; (\*) Alternatively, antigen retrieval may be performed with citrate buffer pH 6.0**

### Positive Controls:

WB : HeLa cells, MCF-7 cells, RKO cells, fetal human brain tissue

IHC : human ovary cancer tissue,

## Background Information

TXNDC15 (thioredoxin domain-containing protein 15) is a single-pass type I transmembrane protein that contains a thioredoxin domain and is primarily localized in the cytoplasm. It plays a positive regulatory role in the Hedgehog signaling pathway within cilia and actively participates in the process of ciliogenesis, exerting significant influence on the structure and function of cilia-an essential cellular organelle. Additionally, TXNDC15 has been found to form mixed disulfide complexes with endoplasmic reticulum-resident protein disulfide isomerase (PDI) family members, such as ERp57, PDI, and ERp44, suggesting its involvement in protein folding and quality control processes. Notably, mutations in the TXNDC15 gene are associated with a rare and lethal genetic disorder known as Meckel-Gruber syndrome, which is caused by defects in ciliogenesis.

## Storage

### Storage:

Store at -20°C. Stable for one year after shipment.

### Storage Buffer:

PBS with 0.02% sodium azide and 50% glycerol, pH7.3

Aliquoting is unnecessary for -20°C storage

\*\*\* 20ul sizes contain 0.1% BSA

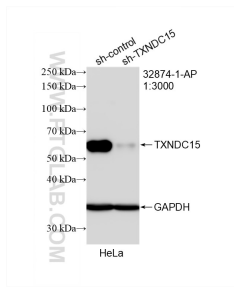
For technical support and original validation data for this product please contact:

T: 1 (888) 4PTGLAB (1-888-478-4522) (toll free in USA), or 1(312) 455-8498 (outside USA)

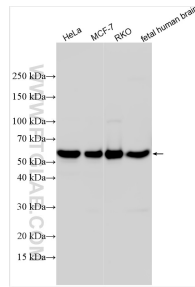
E: proteintech@ptglab.com  
W: ptglab.com

This product is exclusively available under Proteintech Group brand and is not available to purchase from any other manufacturer.

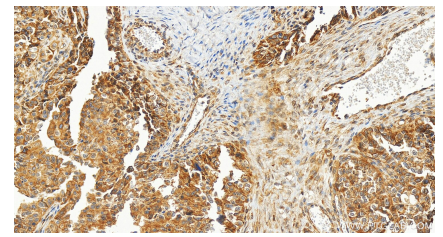
## Selected Validation Data



WB result of TXNDC15 antibody (32874-1-AP; 1:3000; incubated at room temperature for 1.5 hours) with sh-Control and sh-TXNDC15 transfected HeLa cells.



Various lysates were subjected to SDS PAGE followed by western blot with 32874-1-AP (TXNDC15 antibody) at dilution of 1:3000 incubated at room temperature for 1.5 hours.



Immunohistochemical analysis of paraffin-embedded human ovary cancer tissue slide using 32874-1-AP (TXNDC15 antibody) at dilution of 1:600 (under 20x lens). Heat mediated antigen retrieval with Tris-EDTA buffer (pH 9.0).