

For Research Use Only

# OVCH1 Polyclonal antibody

Catalog Number: 32879-1-AP



## Basic Information

<b>Catalog Number:</b> 32879-1-AP	<b>GenBank Accession Number:</b> BC156869	<b>Purification Method:</b> Antigen affinity Purification
<b>Size:</b> 150ul , Concentration: 400 ug/ml by Nanodrop;	<b>GeneID (NCBI):</b> 341350	<b>Recommended Dilutions:</b> WB: 1:500-1:2000
<b>Source:</b> Rabbit	<b>UNIPROT ID:</b> Q7RTY7	
<b>Isotype:</b> IgG	<b>Full Name:</b> ovochoymase 1	
<b>Immunogen Catalog Number:</b> AG37723	<b>Calculated MW:</b> 1134 aa, 125 kDa	
	<b>Observed MW:</b> 125-135 kDa	

## Applications

<b>Tested Applications:</b> WB, ELISA	<b>Positive Controls:</b> WB : A549 cells, HEL cells
<b>Species Specificity:</b> human	

## Background Information

OVCH1 (Ovochoymase 1) is a secretory protein that belongs to the serine protease family and is predicted to have metal ion binding activity and serine-type endopeptidase activity. It is involved in the proteolysis process and functions within the plasma membrane. OVCH1 contains CUB domains and a Trypsin-like serine protease domain, which suggest that OVCH1 may play a role in development. Additionally, genetic variations in the OVCH1 gene may affect its function, thereby influencing individual phenotypes.

## Storage

**Storage:**  
Store at -20°C. Stable for one year after shipment.  
**Storage Buffer:**  
PBS with 0.02% sodium azide and 50% glycerol, pH7.3  
Aliquoting is unnecessary for -20°C storage

\*\*\* 20ul sizes contain 0.1% BSA

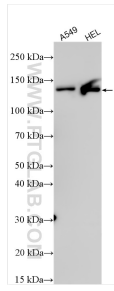
For technical support and original validation data for this product please contact:

T: 1 (888) 4PTGLAB (1-888-478-4522) (toll free in USA), or 1(312) 455-8498 (outside USA)

E: [proteintech@ptglab.com](mailto:proteintech@ptglab.com)  
W: [ptglab.com](http://ptglab.com)

This product is exclusively available under Proteintech Group brand and is not available to purchase from any other manufacturer.

## Selected Validation Data



Various lysates were subjected to SDS PAGE followed by western blot with 32879-1-AP (OVCH1 antibody) at dilution of 1:1000 incubated at room temperature for 1.5 hours.