

For Research Use Only

OVCH1 Polyclonal antibody, PBS Only

Catalog Number:32879-1-PBS



Basic Information

Catalog Number:

32879-1-PBS

Size:

100ug, Concentration: 1 mg/ml by Nanodrop;

Source:

Rabbit

Isotype:

IgG

Immunogen Catalog Number:

AG37723

GenBank Accession Number:

BC156869

GeneID (NCBI):

341350

UNIPROT ID:

Q7RTY7

Full Name:

ovochymase 1

Calculated MW:

1134 aa, 125 kDa

Observed MW:

125-135 kDa

Purification Method:

Antigen affinity Purification

Applications

Tested Applications:

WB, Indirect ELISA

Species Specificity:

human

Background Information

OVCH1 (Ovochymase 1) is a secretory protein that belongs to the serine protease family and is predicted to have metal ion binding activity and serine-type endopeptidase activity. It is involved in the proteolysis process and functions within the plasma membrane. OVCH1 contains CUB domains and a Trypsin-like serine protease domain, which suggest that OVCH1 may play a role in development. Additionally, genetic variations in the OVCH1 gene may affect its function, thereby influencing individual phenotypes.

Storage

Storage:

Store at -80°C.

Storage Buffer:

PBS only, pH7.3

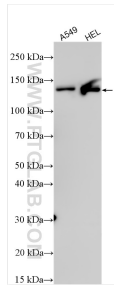
For technical support and original validation data for this product please contact:

T: 1 (888) 4PTGLAB (1-888-478-4522) (toll free in USA), or 1(312) 455-8498 (outside USA)

E: proteintech@ptglab.com
W: ptglab.com

This product is exclusively available under Proteintech Group brand and is not available to purchase from any other manufacturer.

Selected Validation Data



Various lysates were subjected to SDS PAGE followed by western blot with 32879-1-AP (OVCH1 antibody) at dilution of 1:1000 incubated at room temperature for 1.5 hours. This data was developed using the same antibody clone with 32879-1-PBS in a different storage buffer formulation.