

For Research Use Only

L1CAM Polyclonal antibody

Catalog Number: 32885-1-AP



Basic Information

Catalog Number: 32885-1-AP	GenBank Accession Number: N/A	Purification Method: Antigen affinity Purification
Size: 150ul , Concentration: 400 ug/ml by Nanodrop;	GeneID (NCBI): 16728	Recommended Dilutions: WB: 1:2000-1:16000 IHC: 1:200-1:800
Source: Rabbit	UNIPROT ID: P11627	
Isotype: IgG	Full Name: L1 cell adhesion molecule	
Immunogen Catalog Number: EG3022	Calculated MW: 141 kDa	
	Observed MW: 200-220 kDa, 140 kDa	

Applications

Tested Applications: WB, IHC, ELISA	Positive Controls:
Species Specificity: mouse, rat	WB : mouse brain tissue, mouse cerebellum tissue, rat brain tissue, rat cerebellum tissue
Note-IHC: suggested antigen retrieval with TE buffer pH 9.0; (*) Alternatively, antigen retrieval may be performed with citrate buffer pH 6.0	IHC : mouse cerebellum tissue, mouse brain tissue

Background Information

L1CAM, also known as NCAM-L1 or CD171, is a cell adhesion molecule of the immunoglobulin superfamily. It is a 200-220 kDa transmembrane glycoprotein composed of six Ig-like domains and five fibronectin type III repeats followed by a transmembrane region and a highly conserved cytoplasmic tail (PMID: 3412448; 22796939). L1CAM is primarily expressed in the nervous system and is involved in neuron-neuron adhesion, neurite fasciculation, outgrowth of neurites, cerebellar granule cell migration, neurite outgrowth on Schwann cells and interactions among epithelial cells of intestinal crypts (PMID: 3412448; 10767310). L1CAM is overexpressed in many human cancers and is often associated with bad prognosis (PMID: 27267927; 26111503). It has been reported that L1CAM can be proteolytically cleaved into a soluble fragment of 140 kDa and an intracellular fragment of 80-85 kDa (PMID: 30842511; 34380733).

Storage

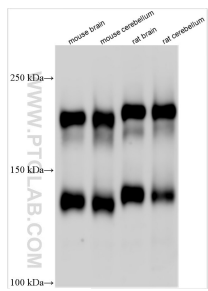
Storage:
Store at -20°C. Stable for one year after shipment.
Storage Buffer:
PBS with 0.02% sodium azide and 50% glycerol, pH7.3
Aliquoting is unnecessary for -20°C storage

*** 20ul sizes contain 0.1% BSA

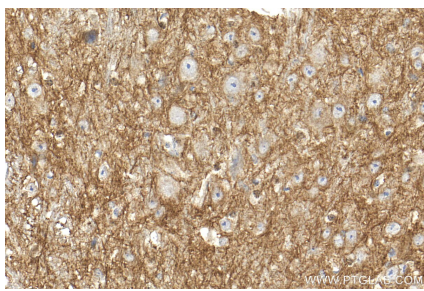
For technical support and original validation data for this product please contact:
T: 1 (888) 4PTGLAB (1-888-478-4522) (toll free in USA), or 1(312) 455-8498 (outside USA)
E: proteintech@ptglab.com
W: ptglab.com

This product is exclusively available under Proteintech Group brand and is not available to purchase from any other manufacturer.

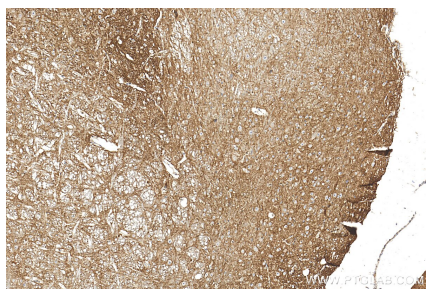
Selected Validation Data



Various lysates were subjected to SDS PAGE followed by western blot with 32885-1-AP (L1CAM antibody) at dilution of 1:8000 incubated at room temperature for 1.5 hours.



Immunohistochemical analysis of paraffin-embedded mouse cerebellum tissue slide using 32885-1-AP (L1CAM antibody) at dilution of 1:400 (under 40x lens). Heat mediated antigen retrieval with Tris-EDTA buffer (pH 9.0).



Immunohistochemical analysis of paraffin-embedded mouse cerebellum tissue slide using 32885-1-AP (L1CAM antibody) at dilution of 1:400 (under 10x lens). Heat mediated antigen retrieval with Tris-EDTA buffer (pH 9.0).