

For Research Use Only

KCTD4 Polyclonal antibody

Catalog Number: 32898-1-AP



Basic Information

Catalog Number:

32898-1-AP

Size:

150ul , Concentration: 300 ug/ml by Nanodrop;

Source:

Rabbit

Isotype:

IgG

Immunogen Catalog Number:

AG37112

GenBank Accession Number:

BC018063

GeneID (NCBI):

386618

UNIPROT ID:

Q8WVF5

Full Name:

potassium channel tetramerisation domain containing 4

Calculated MW:

30 kDa

Observed MW:

30 kDa

Purification Method:

Antigen affinity Purification

Recommended Dilutions:

WB: 1:1000-1:4000

Applications

Tested Applications:

WB, ELISA

Species Specificity:

human, mouse, rat

Positive Controls:

WB : mouse brain tissue, rat brain tissue

Background Information

The family of potassium channel tetramerization domain (KCTD) proteins consists of 26 members (PMID: 24268103). Potassium channel tetramerization domain containing 4 (KCTD4) is a protein that interacts with CLIC1 to disrupt calcium homeostasis and promote metastasis in esophageal cancer. KCTD4 expression is upregulated in metastatic esophageal squamous cell carcinoma (ESCC), and high KCTD4 expression is associated with poor prognosis in patients with ESCC. This process activates fibroblasts in a paracrine manner, promoting cancer cell invasion via MMP24 signaling as positive feedback (PMID: 37799381).

Storage

Storage:

Store at -20°C. Stable for one year after shipment.

Storage Buffer:

PBS with 0.02% sodium azide and 50% glycerol, pH7.3

Aliquoting is unnecessary for -20°C storage

***** 20ul sizes contain 0.1% BSA**

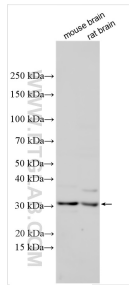
For technical support and original validation data for this product please contact:

T: 1 (888) 4PTGLAB (1-888-478-4522) (toll free in USA), or 1(312) 455-8498 (outside USA)

E: proteintech@ptglab.com
W: ptglab.com

This product is exclusively available under Proteintech Group brand and is not available to purchase from any other manufacturer.

Selected Validation Data



Various lysates were subjected to SDS PAGE followed by western blot with 32898-1-AP (KCTD4 antibody) at dilution of 1:2000 incubated at room temperature for 1.5 hours.