

For Research Use Only

SFT2D2 Polyclonal antibody, PBS Only

Catalog Number: 32914-1-PBS



Basic Information

Catalog Number:

32914-1-PBS

Size:

100ug, Concentration: 1 mg/ml by Nanodrop;

Source:

Rabbit

Isotype:

IgG

Immunogen Catalog Number:

AG36996

GenBank Accession Number:

BC068098

GeneID (NCBI):

375035

UNIPROT ID:

O95562

Full Name:

SFT2 domain containing 2

Calculated MW:

160 aa, 18 kDa

Observed MW:

18 kDa

Purification Method:

Antigen affinity Purification

Applications

Tested Applications:

WB, Indirect ELISA

Species Specificity:

human

Background Information

SFT2D2 is part of the SFT2 protein family, which is involved in managing membrane traffic inside cells. Its specific molecular role is linked to the Golgi apparatus, a central hub for processing and sorting proteins.

Storage

Storage:

Store at -80°C.

Storage Buffer:

PBS only, pH7.3

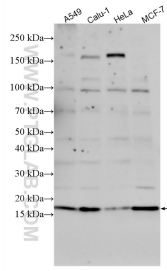
For technical support and original validation data for this product please contact:

T: 1 (888) 4PTGLAB (1-888-478-4522) (toll free in USA), or 1(312) 455-8498 (outside USA)

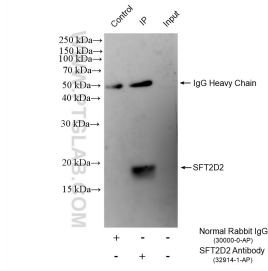
E: proteintech@ptglab.com
W: ptglab.com

This product is exclusively available under Proteintech Group brand and is not available to purchase from any other manufacturer.

Selected Validation Data



Various lysates were subjected to SDS PAGE followed by western blot with 32914-1-AP (SFT2D2 antibody) at dilution of 1:500 incubated at room temperature for 1.5 hours. This data was developed using the same antibody clone with 32914-1-PBS in a different storage buffer formulation.



IP result of anti-SFT2D2 (IP:32914-1-AP, 4ug; Detection:32914-1-AP 1:500) with HeLa cells lysate 960 ug. This data was developed using the same antibody clone with 32914-1-PBS in a different storage buffer formulation.