

For Research Use Only

C3orf22 Polyclonal antibody, PBS Only

Catalog Number:32918-1-PBS



Basic Information

Catalog Number: 32918-1-PBS	GenBank Accession Number: BC032025	Purification Method: Antigen affinity Purification
Size: 100ug , Concentration: 1 mg/ml by Nanodrop;	GeneID (NCBI): 152065	
Source: Rabbit	UNIPROT ID: Q8N5N4	
Isotype: IgG	Full Name: chromosome 3 open reading frame 22	
Immunogen Catalog Number: AG38384	Calculated MW: 141 aa, 16 kDa	
	Observed MW: 21 kDa	

Applications

Tested Applications:
WB, Indirect ELISA

Species Specificity:
human

Background Information

C3orf22 is a gene located on chromosome 3 that encodes a protein known as Chromosome 3 Open Reading Frame 22. During embryonic development, C3orf22 is expressed in various tissues and organs, such as the brain, heart, and limbs. Its expression may be regulated by developmental stage-specific factors and signaling pathways.

Storage

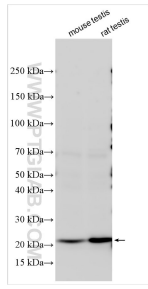
Storage:
Store at -80°C.

Storage Buffer:
PBS only

For technical support and original validation data for this product please contact:
T: 1 (888) 4PTGLAB (1-888-478-4522) (toll free in USA), or 1(312) 455-8498 (outside USA) E: proteintech@ptglab.com
W: ptglab.com

This product is exclusively available under Proteintech Group brand and is not available to purchase from any other manufacturer.

Selected Validation Data



Various lysates were subjected to SDS PAGE followed by western blot with 32918-1-AP (C3orf22 antibody) at dilution of 1:600 incubated at room temperature for 1.5 hours. This data was developed using the same antibody clone with 32918-1-PBS in a different storage buffer formulation.