

For Research Use Only

# CFAP221 Polyclonal antibody

Catalog Number: 32922-1-AP



## Basic Information

<b>Catalog Number:</b> 32922-1-AP	<b>GenBank Accession Number:</b> NM_001271049.1	<b>Purification Method:</b> Antigen affinity Purification
<b>Size:</b> 150ul , Concentration: 660 ug/ml by Nanodrop;	<b>GeneID (NCBI):</b> 200373	<b>Recommended Dilutions:</b> WB: 1:500-1:2000
<b>Source:</b> Rabbit	<b>UNIPROT ID:</b> Q4G0U5	
<b>Isotype:</b> IgG	<b>Full Name:</b> primary ciliary dyskinesia protein 1	
<b>Immunogen Catalog Number:</b> AG38512	<b>Calculated MW:</b> 97kDa 840a	
	<b>Observed MW:</b> 100 kDa	

## Applications

<b>Tested Applications:</b> WB, ELISA	<b>Positive Controls:</b> WB : MG-63 cells,
<b>Species Specificity:</b> human	

## Background Information

CFAP221 (also known as PCDP1) is a crucial structural protein in motile cilia and sperm flagella. It is specifically located within the axillary shaft of the cilia and acts as a "connection bridge" between the adjacent outer doublet microtubules, playing a role in stabilizing the core skeleton of the axillary shaft and coordinating the sliding of microtubules. The loss of this protein's function will disrupt the structural integrity and normal oscillation of the cilia, leading to a genetic disorder known as primary ciliary dyskinesia.

## Storage

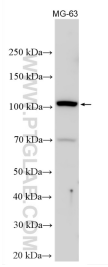
**Storage:**  
Store at -20°C. Stable for one year after shipment.  
**Storage Buffer:**  
PBS with 0.02% sodium azide and 50% glycerol, pH7.3  
Aliquoting is unnecessary for -20°C storage

\*\*\* 20ul sizes contain 0.1% BSA

For technical support and original validation data for this product please contact:  
T: 1 (888) 4PTGLAB (1-888-478-4522) (toll free in USA), or 1(312) 455-8498 (outside USA)  
E: proteintech@ptglab.com  
W: ptglab.com

This product is exclusively available under Proteintech Group brand and is not available to purchase from any other manufacturer.

## Selected Validation Data



MG-63 cells were subjected to SDS PAGE followed by western blot with 32922-1-AP (CFAP221 antibody) at dilution of 1:1000 incubated at room temperature for 1.5 hours.