

For Research Use Only

CFAP221 Polyclonal antibody, PBS Only

Catalog Number: 32922-1-PBS



Basic Information

Catalog Number: 32922-1-PBS	GenBank Accession Number: NM_001271049.1	Purification Method: Antigen affinity Purification
Size: 100ug , Concentration: 1 mg/ml by Nanodrop;	GeneID (NCBI): 200373	
Source: Rabbit	UNIPROT ID: Q4G0U5	
Isotype: IgG	Full Name: primary ciliary dyskinesia protein 1	
Immunogen Catalog Number: AG38512	Calculated MW: 97kDa 840a	
	Observed MW: 100 kDa	

Applications

Tested Applications:
WB, Indirect ELISA

Species Specificity:
human

Background Information

CFAP221 (also known as PCDP1) is a crucial structural protein in motile cilia and sperm flagella. It is specifically located within the axillary shaft of the cilia and acts as a "connection bridge" between the adjacent outer doublet microtubules, playing a role in stabilizing the core skeleton of the axillary shaft and coordinating the sliding of microtubules. The loss of this protein's function will disrupt the structural integrity and normal oscillation of the cilia, leading to a genetic disorder known as primary ciliary dyskinesia.

Storage

Storage:
Store at -80°C.

Storage Buffer:
PBS only, pH7.3

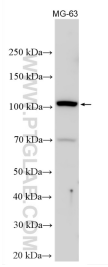
For technical support and original validation data for this product please contact:

T: 1 (888) 4PTGLAB (1-888-478-4522) (toll free in USA), or 1(312) 455-8498 (outside USA)

E: proteintech@ptglab.com
W: ptglab.com

This product is exclusively available under Proteintech Group brand and is not available to purchase from any other manufacturer.

Selected Validation Data



MG-63 cells were subjected to SDS PAGE followed by western blot with 32922-1-AP (CFAP221 antibody) at dilution of 1:1000 incubated at room temperature for 1.5 hours. This data was developed using the same antibody clone with 32922-1-PBS in a different storage buffer formulation.