

For Research Use Only

CHD1L Polyclonal antibody

Catalog Number: 32923-1-AP



Basic Information

Catalog Number: 32923-1-AP	GenBank Accession Number: NM_004284.5	Purification Method: Antigen affinity Purification
Size: 150ul , Concentration: 450 ug/ml by Nanodrop;	GeneID (NCBI): 9557	Recommended Dilutions: WB: 1:1000-1:4000
Source: Rabbit	UNIPROT ID: Q86WJ1	
Isotype: IgG	Full Name: chromodomain helicase DNA binding protein 1-like	
Immunogen Catalog Number: AG38526	Calculated MW: 101kDa 897aa	
	Observed MW: 101 kDa	

Applications

Tested Applications: WB, ELISA	Positive Controls: WB : A549 cells, HEK-293 cells, HeLa cells, HepG2 cells, MOLT-4 cells, U2OS cells
Species Specificity: human	

Background Information

CHD1L (Chromodomain Helicase DNA Binding Protein 1-Like), also known as ALC1 (Amplified in Liver Cancer 1), encodes a multifunctional protein involved in various cellular processes such as chromatin remodeling, cell differentiation, and development. CHD1L acts as an ATP-dependent chromatin remodeling enzyme with an ATPase catalytic domain activated by double-stranded DNA. It interacts with PARP1 (poly-ADP-ribose polymerase 1) to promote chromatin relaxation at DNA damage sites, facilitating DNA repair. Overexpression of CHD1L leads to dysregulation of downstream targets in various cancers.

Storage

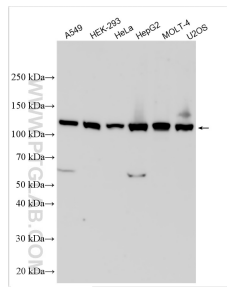
Storage:
Store at -20°C. Stable for one year after shipment.
Storage Buffer:
PBS with 0.02% sodium azide and 50% glycerol, pH7.3
Aliquoting is unnecessary for -20°C storage

*** 20ul sizes contain 0.1% BSA

For technical support and original validation data for this product please contact:
T: 1 (888) 4PTGLAB (1-888-478-4522) (toll free in USA), or 1(312) 455-8498 (outside USA)
E: proteintech@ptglab.com
W: ptglab.com

This product is exclusively available under Proteintech Group brand and is not available to purchase from any other manufacturer.

Selected Validation Data



Various lysates were subjected to SDS PAGE followed by western blot with 32923-1-AP (CHD1L antibody) at dilution of 1:2000 incubated at room temperature for 1.5 hours.