

For Research Use Only

CIR Polyclonal antibody

Catalog Number: 32928-1-AP



Basic Information

Catalog Number: 32928-1-AP	GenBank Accession Number: NM_004882.3	Purification Method: Antigen affinity Purification
Size: 150ul , Concentration: 3000 ug/ml by Nanodrop;	GeneID (NCBI): 9541	Recommended Dilutions: WB: 1:1000-1:6000
Source: Rabbit	UNIPROT ID: Q86X95	
Isotype: IgG	Full Name: CBF1 interacting corepressor	
Immunogen Catalog Number: AG38647	Calculated MW: 52kDa 450aa	
	Observed MW: 23 kDa	

Applications

Tested Applications: WB, ELISA	Positive Controls: WB : mouse brain tissue, mouse heart tissue, mouse liver tissue, mouse pancreas tissue
Species Specificity: human, mouse	

Background Information

CIR, a protein originally identified as a CBF1-interacting protein and reported to act as a transcriptional corepressor. CIR is a member of the family of SR-related proteins and that CIR plays a role in splicing regulation. In addition to a basic lysine and acidic serine-rich (BA) domain and a zinc knuckle-like motif, CIR has an arginine/serine dipeptide repeat (RS) domain in its C terminal region. The RS domain has been reported to be present in the superfamily of SR proteins, which are involved in splicing reactions (PMID: 15652350).

Storage

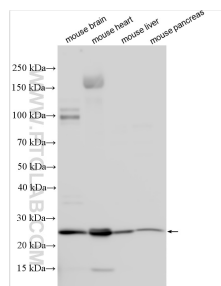
Storage:
Store at -20°C. Stable for one year after shipment.
Storage Buffer:
PBS with 0.02% sodium azide and 50% glycerol, pH7.3
Aliquoting is unnecessary for -20°C storage

*** 20ul sizes contain 0.1% BSA

For technical support and original validation data for this product please contact:
T: 1 (888) 4PTGLAB (1-888-478-4522) (toll free in USA), or 1(312) 455-8498 (outside USA)
E: proteintech@ptglab.com
W: ptglab.com

This product is exclusively available under Proteintech Group brand and is not available to purchase from any other manufacturer.

Selected Validation Data



Various lysates were subjected to SDS PAGE followed by western blot with 32928-1-AP (CIR antibody) at dilution of 1:3000 incubated at room temperature for 1.5 hours.