

For Research Use Only

# CD2BP2 Polyclonal antibody, PBS Only

Catalog Number: 32930-1-PBS



## Basic Information

<b>Catalog Number:</b> 32930-1-PBS	<b>GenBank Accession Number:</b> NM_001243646.1	<b>Purification Method:</b> Antigen affinity Purification
<b>Size:</b> 100ug , Concentration: 1 mg/ml by Nanodrop;	<b>GeneID (NCBI):</b> 10421	
<b>Source:</b> Rabbit	<b>UNIPROT ID:</b> O95400	
<b>Isotype:</b> IgG	<b>Full Name:</b> CD2 (cytoplasmic tail) binding protein 2	
<b>Immunogen Catalog Number:</b> AG38662	<b>Calculated MW:</b> 38kDa 341aa	
	<b>Observed MW:</b> 50 kDa	

## Applications

**Tested Applications:**  
WB, Indirect ELISA

**Species Specificity:**  
human

## Background Information

CD2BP2 (CD2-binding protein 2) is a multifunctional protein that was initially identified as a binding partner of the T-cell surface antigen CD2. It binds to the cytoplasmic tail of CD2 through its C-terminal GYF domain in the cytoplasm, regulating CD2-mediated T-lymphocyte activation. Additionally, CD2BP2 is a component of the U5 small nuclear ribonucleoprotein complex (snRNP), participating in the RNA splicing process. Studies have shown that CD2BP2 plays a crucial role in embryonic development; its absence leads to delayed embryonic growth, vascularization defects, and death by embryonic day 10.5. Specific depletion of CD2BP2 in renal podocytes results in proteinuria and ultimately fatal renal failure.

## Storage

**Storage:**  
Store at -80°C.

**Storage Buffer:**  
PBS only, pH7.3

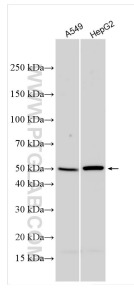
For technical support and original validation data for this product please contact:

T: 1 (888) 4PTGLAB (1-888-478-4522) (toll free in USA), or 1(312) 455-8498 (outside USA)

E: [proteintech@ptglab.com](mailto:proteintech@ptglab.com)  
W: [ptglab.com](http://ptglab.com)

**This product is exclusively available under Proteintech Group brand and is not available to purchase from any other manufacturer.**

## Selected Validation Data



Various lysates were subjected to SDS PAGE followed by western blot with 32930-1-AP (CD2BP2 antibody) at dilution of 1:4000 incubated at room temperature for 1.5 hours. This data was developed using the same antibody clone with 32930-1-PBS in a different storage buffer formulation.