

For Research Use Only

# GTPBP10 Polyclonal antibody, PBS Only

Catalog Number: 32944-1-PBS



## Basic Information

<b>Catalog Number:</b> 32944-1-PBS	<b>GenBank Accession Number:</b> BC107714	<b>Purification Method:</b> Antigen affinity Purification
<b>Size:</b> 100ug, Concentration: 1 mg/ml by Nanodrop;	<b>GeneID (NCBI):</b> 85865	
<b>Source:</b> Rabbit	<b>UNIPROT ID:</b> A4D1E9	
<b>Isotype:</b> IgG	<b>Full Name:</b> GTP-binding protein 10 (putative)	
<b>Immunogen Catalog Number:</b> AG37974	<b>Calculated MW:</b> 43, 34, 12 kDa	
	<b>Observed MW:</b> 42, 34, 20 kDa	

## Applications

**Tested Applications:**  
WB, Indirect ELISA

**Species Specificity:**  
human, mouse

## Background Information

GTPBP10, a member of the conserved Obg family of P-loop small G proteins, is a mitochondrial protein. The absence of GTPBP10 leads to attenuated mtLSU and mtSSU levels and the virtual absence of the 55S monosome, which entirely prevents mitochondrial protein synthesis. GTPBP10 physically interacts with the 16S rRNA, but not with the 12S rRNA, and crosslinks with several mtLSU proteins. Additionally, GTPBP10 is indirectly required for efficient processing of the 12S-16S rRNA precursor transcript, which could explain the mtSSU accumulation defect (PMID: 30321378).

## Storage

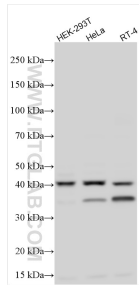
**Storage:**  
Store at -80°C.

**Storage Buffer:**  
PBS only, pH7.3

For technical support and original validation data for this product please contact:  
T: 1 (888) 4PTGLAB (1-888-478-4522) (toll free in USA), or 1(312) 455-8498 (outside USA)      E: proteintech@ptglab.com  
W: ptglab.com

This product is exclusively available under Proteintech Group brand and is not available to purchase from any other manufacturer.

## Selected Validation Data



Various lysates were subjected to SDS PAGE followed by western blot with 32944-1-AP (GTPBP10 antibody) at dilution of 1:1000 incubated at room temperature for 1.5 hours. This data was developed using the same antibody clone with 32944-1-PBS in a different storage buffer formulation.