

For Research Use Only

# ADAM23 Polyclonal antibody, PBS Only

Catalog Number:32969-1-PBS



## Basic Information

<b>Catalog Number:</b> 32969-1-PBS	<b>GenBank Accession Number:</b> BC132765	<b>Purification Method:</b> Antigen affinity Purification
<b>Size:</b> 100ug , Concentration: 1 mg/ml by Nanodrop;	<b>GeneID (NCBI):</b> 8745	
<b>Source:</b> Rabbit	<b>UNIPROT ID:</b> O75077	
<b>Isotype:</b> IgG	<b>Full Name:</b> ADAM metalloproteinase domain 23	
<b>Immunogen Catalog Number:</b> AG35744	<b>Calculated MW:</b> 832 aa, 92 kDa	
	<b>Observed MW:</b> 92 kDa, 70 kDa	

## Applications

**Tested Applications:**  
WB, Indirect ELISA

**Species Specificity:**  
human, mouse, rat

## Background Information

ADAM23 (A disintegrin and metalloprotease protein 23), also known as MDC-3 (Metalloproteinase-like, disintegrin-like, and cysteine-rich protein 3) is a transmembrane type I glycoprotein involved with the development and maintenance of the nervous system, including neurite outgrowth, neuronal adhesion and differentiation and regulation of synaptic transmission. In addition, ADAM23 seems to participate in immune response and tumor establishment through interaction with different members of integrin receptors (PMID: 19692335). Two forms of ADAM23 have been previously described in primary cerebellar granule cells as an unprocessed precursor (100 kDa) and mature (70 kDa) protein, respectively (PMID: 29792904).

## Storage

**Storage:**  
Store at -80°C.

**Storage Buffer:**  
PBS only, pH7.3

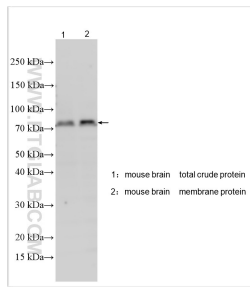
For technical support and original validation data for this product please contact:

T: 1 (888) 4PTGLAB (1-888-478-4522) (toll free in USA), or 1(312) 455-8498 (outside USA)

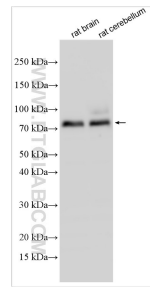
E: [proteintech@ptglab.com](mailto:proteintech@ptglab.com)  
W: [ptglab.com](http://ptglab.com)

**This product is exclusively available under Proteintech Group brand and is not available to purchase from any other manufacturer.**

## Selected Validation Data



Various lysates were subjected to SDS PAGE followed by western blot with 32969-1-AP (ADAM23 antibody) at dilution of 1:1000 incubated at room temperature for 1.5 hours. This data was developed using the same antibody clone with 32969-1-PBS in a different storage buffer formulation.



Various lysates were subjected to SDS PAGE followed by western blot with 32969-1-AP (ADAM23 antibody) at dilution of 1:1000 incubated at room temperature for 1.5 hours. This data was developed using the same antibody clone with 32969-1-PBS in a different storage buffer formulation.