

For Research Use Only

# ADAM11 Polyclonal antibody, PBS Only

Catalog Number:32970-1-PBS



## Basic Information

**Catalog Number:**

32970-1-PBS

**Size:**

100ug , Concentration: 1 mg/ml by Nanodrop;

**Source:**

Rabbit

**Isotype:**

IgG

**Immunogen Catalog Number:**

AG35877

**GenBank Accession Number:**

NM\_001318933

**GeneID (NCBI):**

4185

**UNIPROT ID:**

O75078

**Full Name:**

ADAM metallopeptidase domain 11

**Calculated MW:**

83kDa

**Observed MW:**

83 kDa

**Purification Method:**

Antigen affinity Purification

## Applications

**Tested Applications:**

WB, IHC, IF/ICC, Indirect ELISA

**Species Specificity:**

human, mouse, rat

## Background Information

ADAM11 (A Disintegrin And Metalloprotease 11) is a non-catalytic, transmembrane member of the ADAM family. Although it retains the prototypical multi-domain architecture (signal peptide - pro-domain - metalloprotease-like - disintegrin - cysteine-rich - EGF-like - TM - cytoplasmic tail), it lacks the consensus HEXGHXXGXXHD zinc-binding motif, rendering it proteolytically inactive . Instead, ADAM11 functions as a cell-adhesion and signalling scaffold. (PMID: 31236626)

## Storage

**Storage:**

Store at -80°C.

**Storage Buffer:**

PBS only, pH7.3

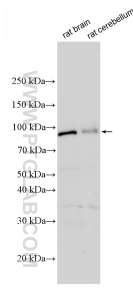
For technical support and original validation data for this product please contact:

T: 1 (888) 4PTGLAB (1-888-478-4522) (toll free in USA), or 1(312) 455-8498 (outside USA)

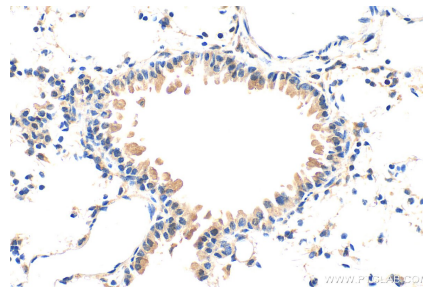
E: [proteintech@ptglab.com](mailto:proteintech@ptglab.com)  
W: [ptglab.com](http://ptglab.com)

**This product is exclusively available under Proteintech Group brand and is not available to purchase from any other manufacturer.**

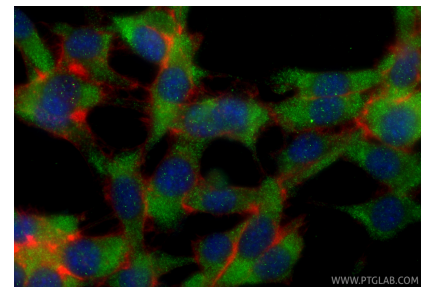
## Selected Validation Data



Various lysates were subjected to SDS PAGE followed by western blot with 32970-1-AP (ADAM11 antibody) at dilution of 1:500 incubated at room temperature for 1.5 hours. This data was developed using the same antibody clone with 32970-1-PBS in a different storage buffer formulation.



Immunohistochemical analysis of paraffin-embedded mouse lung tissue slide using 32970-1-AP (ADAM11 antibody) at dilution of 1:200 (under 40x lens). Heat mediated antigen retrieval with Tris-EDTA buffer (pH 9.0). This data was developed using the same antibody clone with 32970-1-PBS in a different storage buffer formulation.



Immunofluorescent analysis of (-20°C Ethanol) fixed NIH/3T3 cells using ADAM11 antibody (32970-1-AP) at dilution of 1:400 and Coralite®488-Conjugated Goat Anti-Rabbit IgG(H+L) (SA00013-2), CL594-Phalloidin (red). This data was developed using the same antibody clone with 32970-1-PBS in a different storage buffer formulation.