

For Research Use Only

RBPMS2 Polyclonal antibody

Catalog Number: 32971-1-AP



Basic Information

Catalog Number: 32971-1-AP	GenBank Accession Number: NM_194272	Purification Method: Antigen affinity Purification
Size: 150ul , Concentration: 1000 ug/ml by Nanodrop;	GeneID (NCBI): 348093	Recommended Dilutions: WB: 1:500-1:2000
Source: Rabbit	UNIPROT ID: Q6ZRY4	
Isotype: IgG	Full Name: RNA binding protein with multiple splicing 2	
Immunogen Catalog Number: AG37616	Calculated MW: 22 kDa	
	Observed MW: 24 kDa, 26-29 kDa	

Applications

Tested Applications: WB, ELISA	Positive Controls: WB : HepG2 cells, LNCaP cells, LO2 cells, PC-3 cells, U2OS cells
Species Specificity: human	

Background Information

RBPMS2 (RNA binding protein with multiple splicing 2) is an RNA binding protein, and its encoded protein is rich in RNA binding motifs, belonging to the family of RNA binding motifs, and has an RNA recognition motif (RRM) domain, which can bind with RNA molecules and participate in RNA regulation. RBPMS2 is abundant in myocardial cells and plays an important role in the development and function of myocardium. It can regulate the differentiation and proliferation of myocardial cells and maintain the normal function of myocardial cells. In gastric cancer, the expression level of RBPMS2 is related to lymph node metastasis, which can be used as a biomarker to predict the prognosis of gastric cancer.

Storage

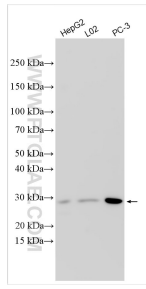
Storage:
Store at -20°C. Stable for one year after shipment.
Storage Buffer:
PBS with 0.02% sodium azide and 50% glycerol, pH7.3
Aliquoting is unnecessary for -20°C storage

*** 20ul sizes contain 0.1% BSA

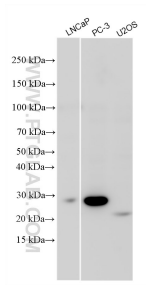
For technical support and original validation data for this product please contact:
T: 1 (888) 4PTGLAB (1-888-478-4522) (toll free in USA), or 1(312) 455-8498 (outside USA)
E: proteintech@ptglab.com
W: ptglab.com

This product is exclusively available under Proteintech Group brand and is not available to purchase from any other manufacturer.

Selected Validation Data



Various lysates were subjected to SDS PAGE followed by western blot with 32971-1-AP (RBPM2 antibody) at dilution of 1:1000 incubated at room temperature for 1.5 hours.



Various lysates were subjected to SDS PAGE followed by western blot with 32971-1-AP (RBPM2 antibody) at dilution of 1:1000 incubated at room temperature for 1.5 hours.