

For Research Use Only

# RBPMS2 Polyclonal antibody, PBS Only

Catalog Number:32971-1-PBS



## Basic Information

<b>Catalog Number:</b> 32971-1-PBS	<b>GenBank Accession Number:</b> NM_194272	<b>Purification Method:</b> Antigen affinity Purification
<b>Size:</b> 100ug , Concentration: 1 mg/ml by Nanodrop;	<b>GeneID (NCBI):</b> 348093	
<b>Source:</b> Rabbit	<b>UNIPROT ID:</b> Q6ZRY4	
<b>Isotype:</b> IgG	<b>Full Name:</b> RNA binding protein with multiple splicing 2	
<b>Immunogen Catalog Number:</b> AG37616	<b>Calculated MW:</b> 22 kDa	
	<b>Observed MW:</b> 26-29 kDa	

## Applications

**Tested Applications:**  
WB, Indirect ELISA

**Species Specificity:**  
human

## Background Information

RBPMS2 (RNA binding protein with multiple splicing 2) is an RNA binding protein, and its encoded protein is rich in RNA binding motifs, belonging to the family of RNA binding motifs, and has an RNA recognition motif (RRM) domain, which can bind with RNA molecules and participate in RNA regulation. RBPMS2 is abundant in myocardial cells and plays an important role in the development and function of myocardium. It can regulate the differentiation and proliferation of myocardial cells and maintain the normal function of myocardial cells. In gastric cancer, the expression level of RBPMS2 is related to lymph node metastasis, which can be used as a biomarker to predict the prognosis of gastric cancer.

## Storage

**Storage:**  
Store at -80°C.

**Storage Buffer:**  
PBS only, pH7.3

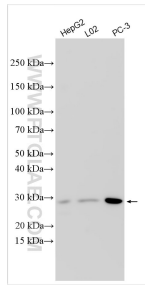
For technical support and original validation data for this product please contact:

T: 1 (888) 4PTGLAB (1-888-478-4522) (toll free in USA), or 1(312) 455-8498 (outside USA)

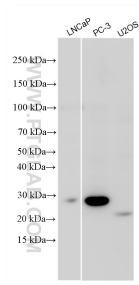
E: [proteintech@ptglab.com](mailto:proteintech@ptglab.com)  
W: [ptglab.com](http://ptglab.com)

**This product is exclusively available under Proteintech Group brand and is not available to purchase from any other manufacturer.**

## Selected Validation Data



Various lysates were subjected to SDS PAGE followed by western blot with 32971-1-AP (RBPMS2 antibody) at dilution of 1:1000 incubated at room temperature for 1.5 hours. This data was developed using the same antibody clone with 32971-1-PBS in a different storage buffer formulation.



Various lysates were subjected to SDS PAGE followed by western blot with 32971-1-AP (RBPMS2 antibody) at dilution of 1:1000 incubated at room temperature for 1.5 hours. This data was developed using the same antibody clone with 32971-1-PBS in a different storage buffer formulation.