

For Research Use Only

KDF1 Polyclonal antibody

Catalog Number: 32975-1-AP



Basic Information

Catalog Number:

32975-1-AP

Size:

150ul , Concentration: 300 ug/ml by Nanodrop;

Source:

Rabbit

Isotype:

IgG

Immunogen Catalog Number:

AG37124

GenBank Accession Number:

NM_152365.2

GeneID (NCBI):

126695

UNIPROT ID:

Q8NAX2

Full Name:

chromosome 1 open reading frame 172

Calculated MW:

44 kDa 398aa

Observed MW:

50 kDa

Purification Method:

Antigen affinity Purification

Recommended Dilutions:

WB: 1:1000-1:2000

Applications

Tested Applications:

WB, ELISA

Species Specificity:

human

Positive Controls:

WB : HT-29 cells, Calu-3 cells, SK-BR-3 cells

Storage

Storage:

Store at -20°C. Stable for one year after shipment.

Storage Buffer:

PBS with 0.02% sodium azide and 50% glycerol, pH7.3

Aliquoting is unnecessary for -20°C storage

*** 20ul sizes contain 0.1% BSA

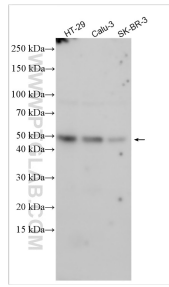
For technical support and original validation data for this product please contact:

T: 1 (888) 4PTGLAB (1-888-478-4522) (toll free in USA), or 1(312) 455-8498 (outside USA)

E: proteintech@ptglab.com
W: ptglab.com

This product is exclusively available under Proteintech Group brand and is not available to purchase from any other manufacturer.

Selected Validation Data



Various lysates were subjected to SDS PAGE followed by western blot with 32975-1-AP (KDF1 antibody) at dilution of 1:2000 incubated at room temperature for 1.5 hours.