

For Research Use Only

KDF1 Polyclonal antibody, PBS Only

Catalog Number: 32975-1-PBS



Basic Information

Catalog Number:

32975-1-PBS

Size:

100ug , Concentration: 1 mg/ml by
Nanodrop;

Source:

Rabbit

Isotype:

IgG

Immunogen Catalog Number:

AG37124

GenBank Accession Number:

NM_152365.2

GeneID (NCBI):

126695

UNIPROT ID:

Q8NAX2

Full Name:

chromosome 1 open reading frame

172

Calculated MW:

44 kDa 398aa

Observed MW:

50 kDa

Purification Method:

Antigen affinity Purification

Applications

Tested Applications:

WB, Indirect ELISA

Species Specificity:

human

Storage

Storage:

Store at -80°C.

Storage Buffer:

PBS only, pH7.3

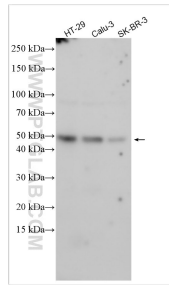
For technical support and original validation data for this product please contact:

T: 1 (888) 4PTGLAB (1-888-478-4522) (toll free
in USA), or 1(312) 455-8498 (outside USA)

E: proteintech@ptglab.com
W: ptglab.com

This product is exclusively available under Proteintech Group brand and is not available to purchase from any other manufacturer.

Selected Validation Data



Various lysates were subjected to SDS PAGE followed by western blot with 32975-1-AP (KDF1 antibody) at dilution of 1:2000 incubated at room temperature for 1.5 hours. This data was developed using the same antibody clone with 32975-1-PBS in a different storage buffer formulation.