

For Research Use Only

Lumican Polyclonal antibody

Catalog Number: 33000-1-AP



Basic Information

Catalog Number: 33000-1-AP	GenBank Accession Number: NM_008524.2	Purification Method: Antigen affinity Purification
Size: 150ul , Concentration: 450 ug/ml by Nanodrop;	GeneID (NCBI): 17022	Recommended Dilutions: WB: 1:20000-1:100000
Source: Rabbit	UNIPROT ID: P51885	
Isotype: IgG	Full Name: lumican	
Immunogen Catalog Number: EG2481	Calculated MW: 38 kDa	
	Observed MW: 50-90 kDa	

Applications

Tested Applications: WB, ELISA	Positive Controls: WB : mouse skin tissue, rat skin tissue
Species Specificity: mouse, rat	

Background Information

Lumican (LUM), a member of the small leucine-rich proteoglycan (SLRP) family, is one of the major extracellular components in interstitial collagenous matrices of the corneal stroma, aorta, skin, skeletal muscle, lung, kidney, bone, cartilage, and intervertebral discs. SLRPs constitute an important fraction of noncollagenous extracellular matrix proteins and have important effects on cell behavior. Lumican regulates collagenous matrix assembly as a keratan sulfate proteoglycan in the cornea and may exist as a glycoprotein in the connective tissues of other organs. Posttranslational modifications lumican goes through can increase its apparent molecular weight to 50-90 kDa.

Storage

Storage:
Store at -20°C. Stable for one year after shipment.
Storage Buffer:
PBS with 0.02% sodium azide and 50% glycerol, pH7.3
Aliquoting is unnecessary for -20°C storage

*** 20ul sizes contain 0.1% BSA

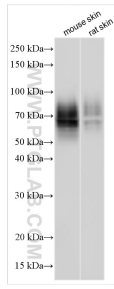
For technical support and original validation data for this product please contact:

T: 1 (888) 4PTGLAB (1-888-478-4522) (toll free in USA), or 1(312) 455-8498 (outside USA)

E: proteintech@ptglab.com
W: ptglab.com

This product is exclusively available under Proteintech Group brand and is not available to purchase from any other manufacturer.

Selected Validation Data



Various lysates were subjected to SDS PAGE followed by western blot with 33000-1-AP (Lum antibody) at dilution of 1:80000 incubated at room temperature for 1.5 hours.