

For Research Use Only

# Surfactant protein D Polyclonal antibody

Catalog Number: 33001-1-AP



## Basic Information

<b>Catalog Number:</b> 33001-1-AP	<b>GenBank Accession Number:</b> NM_009160.2	<b>Purification Method:</b> Antigen affinity Purification
<b>Size:</b> 150ul , Concentration: 500 ug/ml by Nanodrop;	<b>GeneID (NCBI):</b> 20390	<b>Recommended Dilutions:</b> WB: 1:1000-1:6000 IHC: 1:300-1:1200
<b>Source:</b> Rabbit	<b>UNIPROT ID:</b> P50404	
<b>Isotype:</b> IgG	<b>Full Name:</b> surfactant associated protein D	
<b>Immunogen Catalog Number:</b> EG2924	<b>Calculated MW:</b> 38 kDa	
	<b>Observed MW:</b> 40 kDa	

## Applications

<b>Tested Applications:</b> WB, IHC, ELISA	<b>Positive Controls:</b>
<b>Species Specificity:</b> mouse, rat	<b>WB :</b> mouse lung tissue, rat lung tissue <b>IHC :</b> mouse lung tissue, rat lung tissue

**Note-IHC:** suggested antigen retrieval with **TE buffer pH 9.0; (\*) Alternatively, antigen retrieval may be performed with citrate buffer pH 6.0**

## Background Information

Surfactant protein D (SP-D) is a pattern recognition molecule of the collectin family of C-type lectins, which consist of four structural domains: a cysteine-rich N-terminal domain, a collagen-like region, an alpha-helical coiled-coil neck domain and a C-terminal lectin or carbohydrate-recognition domain (PMID: 16213021; 15030473). SP-D is primarily expressed and secreted by type II alveolar cells (PMID: 16684127). It plays a central role in the pulmonary host defence and the modulation of allergic responses.

## Storage

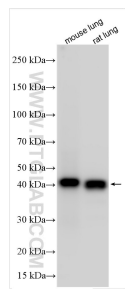
**Storage:**  
Store at -20°C. Stable for one year after shipment.  
**Storage Buffer:**  
PBS with 0.02% sodium azide and 50% glycerol, pH7.3  
**Aliquoting is unnecessary for -20°C storage**

**\*\*\* 20ul sizes contain 0.1% BSA**

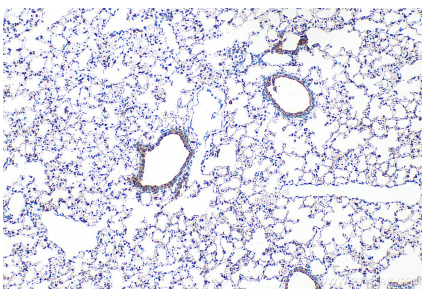
For technical support and original validation data for this product please contact:  
T: 1 (888) 4PTGLAB (1-888-478-4522) (toll free in USA), or 1(312) 455-8498 (outside USA)  
E: [proteintech@ptglab.com](mailto:proteintech@ptglab.com)  
W: [ptglab.com](http://ptglab.com)

This product is exclusively available under Proteintech Group brand and is not available to purchase from any other manufacturer.

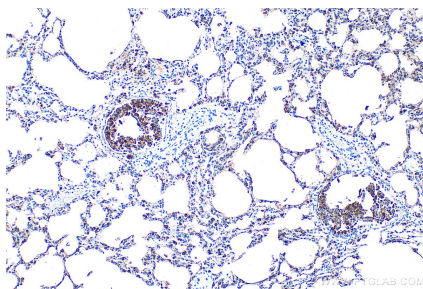
Selected Validation Data



Various lysates were subjected to SDS PAGE followed by western blot with 33001-1-AP (Surfactant protein D antibody) at dilution of 1:3000 incubated at room temperature for 1.5 hours.



Immunohistochemical analysis of paraffin-embedded mouse lung tissue slide using 33001-1-AP (Surfactant protein D antibody) at dilution of 1:600 (under 10x lens). Heat mediated antigen retrieval with Tris-EDTA buffer (pH 9.0).



Immunohistochemical analysis of paraffin-embedded rat lung tissue slide using 33001-1-AP (Surfactant protein D antibody) at dilution of 1:600 (under 10x lens). Heat mediated antigen retrieval with Tris-EDTA buffer (pH 9.0).