

For Research Use Only

PAPP A2 Polyclonal antibody

Catalog Number:33013-1-AP



Basic Information

Catalog Number: 33013-1-AP	GenBank Accession Number: NM_020318.2	Purification Method: Antigen affinity Purification
Size: 150ul , Concentration: 450 ug/ml by Nanodrop;	GeneID (NCBI): 60676	Recommended Dilutions: WB: 1:500-1:2000
Source: Rabbit	UNIPROT ID: Q9BXP8-1	
Isotype: IgG	Full Name: pappalysin 2	
Immunogen Catalog Number: EG2812	Calculated MW: 199 kDa	
	Observed MW: 250 kDa	

Applications

Tested Applications: WB, ELISA	Positive Controls: WB : human placenta tissue,
Species Specificity: human	

Background Information

PAPP A2 (Pregnancy-associated Plasma Protein A2) is a metalloproteinase member of the PAPP A protein family and is mainly secreted by the syncytiotrophoblast cells of the placenta. Unlike PAPP A in the same family that regulates the biological activity of insulin-like growth factors (IGFs), PAPP A2 can specifically cleave and inactivate the IGF-binding protein 5 (IGFBP-5), thereby releasing more free IGFs to promote fetal development. Moreover, its concentration significantly increases in the maternal blood during pregnancy, making it a potential new biomarker for assessing placental function and fetal growth restriction.

Storage

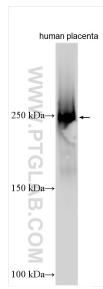
Storage:
Store at -20°C. Stable for one year after shipment.
Storage Buffer:
PBS with 0.02% sodium azide and 50% glycerol, pH7.3
Aliquoting is unnecessary for -20°C storage

***** 20ul sizes contain 0.1% BSA**

For technical support and original validation data for this product please contact:
T: 1 (888) 4PTGLAB (1-888-478-4522) (toll free in USA), or 1(312) 455-8498 (outside USA)
E: proteintech@ptglab.com
W: ptglab.com

This product is exclusively available under Proteintech Group brand and is not available to purchase from any other manufacturer.

Selected Validation Data



Human placenta tissue were subjected to SDS PAGE followed by western blot with 33013-1-AP (PAPP A2 antibody) at dilution of 1:1000 incubated at room temperature for 1.5 hours.